



PRODUCTS CATALOGUE

All images for demonstration use

CONTENTS

About Plas-Fit UK/Contact Details

Quality Approvals/Certifications

Exclusive Singular Warranty

Compression Fittings - PN16 250/350 Series

Pipe Liners

Universal Fittings

Compression Fittings - PN10 250 Series

Electrofusion

Taps, valves and ball valves

Saddles

Self seal threaded fittings

Tools and spare parts

Disclaimer/Copyright

ABOUT PLAS-FIT UK

Plas-Fit are one of the longest established and most respected manufacturers of Water fittings in the world, tracing ancestry back to the dawn of the modern pipe era in 1960.

Our UK warehouse is based in Stoke on Trent where you will find a massive range of approved, quality water fittings.

We offer a highly efficient delivery service and a wealth of experience from our friendly staff, all of whom have a great reputation in the Water industry.

Our products carry British standards, WRAS approval and other International and European approvals giving peace of mind.

Our technical team are always on hand to assist with any technical questions and our sales team will be pleased to advise on any offers or trade deals currently available.

CONTACT DETAILS

Telephone

01782 894912






Email

office@plas-fit.co.uk

Registered Office

Unit 18, Whieldon Industrial Estate
Whieldon Road
Stoke on Trent
ST4 4JP

QUALITY APPROVALS

	Pressure rating (Bar)	Diameter (mm)	Standard	Approval
UK	16	20 - 110	Regulation 4 (2)	
Germany	16	20 - 110	GW 335-B3/ (P)	
The Czech Republic	16	40 - 110	ISO 17885	
Israel	16	16 - 110	SII 17885	
Slovakia	16	40 - 110	ISO 14236	

CERTIFICATIONS



Plas-Fit UK is committed to upholding the highest standards in the water fittings industry, demonstrated by our certifications from Achilles, SAP, and The Pipeline Industries Guild.

Our Achilles accreditation ensures rigorous compliance with industry-wide procurement and safety standards and our Certification with SAP (Supplier Approval Programme) further validates our adherence to stringent quality and performance criteria, ensuring our products meet regulatory and operational requirements.

Additionally, our affiliation with The Pipeline Industries Guild reflects our dedication to best practices, innovation, and continuous improvement within the sector.

EXCLUSIVE SINGULAR WARRANTY

We use only the highest quality materials and manufacturing processes for our products, which meet the highest standards.

We warrant that our compression fittings and accessories for polyethylene pipes, when used properly, are free from defect in material and/or workmanship.

We will replace, at our discretion, any product, deemed by us to be defective in material and/or workmanship.

We warrant all our products for up to ten years and after the warranty period, we continue to provide field repair, maintenance and consultation services.

The full exclusive terms of our warranty are as detailed in our basic commercial warranty and the applicable commercial warranty supplement.

We will not be liable for any commitments or agreements made by any of our agents, representatives and/or dealers, and/or any other commitments, other than the aforementioned basic commercial warranty and the applicable commercial warranty supplement.

COMPRESSION FITTINGS - PN16 250/350 SERIES

Plas-Fit UK 250 and 350 Series are designed to provide best performance with competitive pricing, providing easy installation together with high pressure rating of 16 bars.

Features reliable self-locking grip-ring technology, certified by WRAS (UK) and DVGW (Germany) for use of drinking water installations up to PN16.

Technical Specifications

- ✓ Allows easy installation without need to disassemble the fitting
- ✓ Robust, corrosion-resistant and resistant to most chemicals
- ✓ Stands up to tough working conditions, pipe bending and pull-out forces
- ✓ Complies with WRAS, the Israeli institute of standards and the German standard DVGW
- ✓ Working pressure sizes 63-110: PN16



Series 250 (Easy-Seal) Sizes: 40-63mm

Re- designed seals to reduce the required insertion force of the pipe into the fitting. The new seal provides easy assembly with maximum rated pressure of PN16.



Series 350 (Easy System) Sizes: 75-110mm

No force required for inserting the pipe to the fitting. The pipe is simply dropped into the fitting, and the sealing is done during the tightening of the nut. This provides optimal assembly with maximum rated pressure of PN16.

COMPRESSION FITTINGS - PN16 250/350 SERIES

COUPLING



SIZE	CODE	PRICE
16 x 16	250 16 M 00 16	£5.13
20 x 20	250 20 M 00 20	£6.39
25 x 25	250 25 M 00 25	£6.83
32 x 32	250 32 M 00 32	£16.08
40 x 40	250 40 M 00 40	£34.11
50 x 50	50 50 M 00 50	£35.53
63 x 63	250 63 M 00 63	£51.91
75 x 75	350 75 M 00 75	£88.18
90 x 90	350 90 M 00 90	£101.70
110 x 110	351 10 M 01 10	£177.29



COMPRESSION FITTINGS - PN16 250/350 SERIES

REPAIR COUPLING



SIZE	CODE	PRICE
25 x 25	250 25 K 00 25	£9.26
32 x 32	250 32 K 00 32	£20.89
40 x 40	250 40 K 00 40	£37.69
50 x 50	250 50 K 00 50	£42.64
63 x 63	250 63 K 00 63	£59.51
75 x 75	350 75 K 00 75	£87.29
90 x 90	350 90 K 00 90	£117.79
110 x 110	351 10 K 01 10	£201.06



COMPRESSION FITTINGS - PN16 250/350 SERIES

MALE COUPLING



SIZE	CODE	PRICE
16 x 1/2 "	250 16 M 01 01	£4.24
16 x 3/4 "	250 16 M 01 02	£4.24
20 x 1/2 "	250 20 M 01 01	£5.96
20 x 3/4 "	250 20 M 01 02	£6.38
20 x 1 "	250 20 M 01 03	£8.91
25 x 1/2 "	250 25 M 01 01	£7.16
25 x 3/4 "	250 25 M 01 02	£7.16
25 x 1 "	250 25 M 01 03	£11.08
32 x 3/4 "	250 32 M 01 02	£11.08
32 x 1 "	250 32 M 01 03	£11.08
32 x 1 1/2 "	250 32 M 01 05	£11.08

CONTINUED...

COMPRESSION FITTINGS - PN16 250/350 SERIES

MALE COUPLING Continued

SIZE	CODE	PRICE
40 x 1 "	250 40 M 01 03	£21.25
40 x 1 1/2 "	250 40 M 01 05	£21.25
40 x 2 "	250 40 M 01 06	£21.25
50 x 1 "	250 50 M 01 03	£27.15
50 x 1 1/4 "	250 50 M 01 04	£27.15
50 x 1 1/2 "	250 50 M 01 05	£27.15
50 x 2 "	250 50 M 01 06	£27.15
63 x 1 1/2 "	250 63 M 01 05	£36.37
63 x 2 "	250 63 M 01 06	£36.37
63 x 2 1/2 "	250 63 M 01 07	36.37
75 x 2 "	350 75 M 01 06	£55.18
75 x 2 1/2 "	350 75 M 01 07	£55.18
75 x 3 "	350 75 M 01 08	£55.18
90 x 2 "	350 90 M 01 06	£74.76
90 x 2 1/2 "	350 90 M 01 07	£74.76
90 x 3 "	350 90 M 01 08	£74.76
90 x 4 "	350 90 M 01 14	£74.76
110 x 2 "	351 10 M 01 06	£126.68
110 x 3 "	351 10 M 01 08	£126.68
110 x 4 "	351 10 M 01 14	£126.68



COMPRESSION FITTINGS - PN16 250/350 SERIES

FEMALE COUPLING



SIZE	CODE	PRICE
16 x 1/2 "	250 16 M 02 01	£5.11
16 x 3/4 "	250 16 M 02 02	£5.11
20 x 1/2 "	250 20 M 02 01	£7.16
20 x 3/4 "	250 20 M 02 02	£7.16
25 x 1/2 "	250 25 M 02 01	£7.83
25 x 3/4 "	250 25 M 02 02	£7.80
25 x 1 "	250 25 M 02 03	£7.83
32 x 3/4 "	250 32 M 02 02	£10.55
32 x 1 "	250 32 M 02 03	£10.55

CONTINUED...

COMPRESSION FITTINGS - PN16 250/350 SERIES

FEMALE COUPLING Continued

SIZE	CODE	PRICE
40 x 1 "	250 40 M 02 03	£24.50
40 x 1 1/2 "	250 40 M 02 05	£24.50
50 x 1 1/4 "	250 50 M 02 04	£33.39
50 x 1 1/2 "	250 50 M 02 05	£33.39
50 x 2 "	250 50 M 02 06	£33.39
63 x 1 1/2 "	250 63 M 02 05	£41.97
63 x 2 "	250 63 M 02 06	£41.97
63 x 2 1/2 "	250 63 M 02 07	£41.97
75 x 2 "	350 75 M 02 06	£56.39
75 x 2 1/2 "	350 75 M 02 07	£56.39
75 x 3 "	350 75 M 02 08	£56.14
90 x 2 "	350 90 M 02 06	£77.16
90 x 2 1/2 "	350 90 M 02 07	£77.16
90 x 3 "	350 90 M 02 08	£77.16
90 x 4 "	350 90 M 02 14	£77.16
110 x 3 "	351 10 M 02 08	£162.03
110 x 4 "	351 10 M 02 14	£162.03



COMPRESSION FITTINGS - PN16 250/350 SERIES

REDUCING COUPLING



SIZE	CODE	PRICE
20 x 16	250 20 D 00 16	£11.69
25 x 16	250 25 D 00 16	£12.84
25 x 20	250 25 D 00 20	£12.84
32 x 20	250 32 D 00 20	£21.74
32 x 25	250 32 D 00 25	£21.74
40 x 25	250 40 D 00 25	£36.84
40 x 32	250 40 D 00 32	£36.84
50 x 32	250 50 D 00 32	£49.33
50 x 40	250 50 D 00 40	£49.33
63 x 32	250 63 D 00 32	£62.44
63 x 50	250 63 D 00 50	£62.44
75 x 63	350 75 D 00 63	£82.03
90 x 63	350 90 D 00 63	£108.98
90 x 75	350 90 D 00 75	£108.98
110 x 75	351 10 D 00 75	£177.25
110 x 90	351 10 D 00 90	£187.45



COMPRESSION FITTINGS - PN16 250/350 SERIES

EQUAL TEE



SIZE	CODE	PRICE
16 x 16 x 16	250 16 T 00 16	£8.94
20 x 20 x 20	250 20 T 00 20	£11.21
25 x 25 x 25	250 25 T 00 25	£17.54
32 x 32 x 32	250 32 T 00 32	£23.59
40 x 40 x 40	250 40 T 00 40	£45.76
50 x 50 x 50	250 50 T 00 50	£50.83
63 x 63 x 63	250 63 T 00 63	£76.09
75 x 75 x 75	350 75 T 00 75	£136.68
90 x 90 x 90	350 90 T 00 90	£192.95
110 x 110 x 110	351 10 T 01 10	£392.01



COMPRESSION FITTINGS - PN16 250/350 SERIES

THREADED MALE TEE



SIZE	CODE	PRICE
20 x 1/2 " x 20	250 20 T 01 01	£9.69
20 x 3/4 " x 20	250 20 T 01 02	£9.69
25 x 1/2 " x 25	250 25 T 01 01	£15.73
25 x 3/4 " x 25	250 25 T 01 02	£15.73
32 x 1 " x 32	250 32 T 01 03	£22.33
40 x 1 " x 40	250 40 T 01 03	£33.00
40 x 1 1/2 " x 40	250 40 T 01 05	£33.00
50 x 1 1/2 " x 50	250 50 T 01 05	£46.64
63 x 2 " x 63	250 63 T 01 06	£63.15
75 x 2 " x 75	350 75 T 01 06	£97.33
75 x 2 1/2 " x 75	350 75 T 01 07	£102.19
75 x 3 " x 75	350 75 T 01 08	£107.30
90 x 3 " x 90	350 90 T 01 08	£123.30
110 x 4 " x 110	351 10 T 01 14	£273.08



COMPRESSION FITTINGS - PN16 250/350 SERIES

THREADED FEMALE TEE



SIZE	CODE	PRICE
16 x 1/2 " x 16	250 16 T 02 01	£8.05
16 x 3/4 " x 16	250 16 T 02 02	£8.05
20 x 1/2 " x 20	250 20 T 02 01	£10.31
20 x 3/4 " x 20	250 20 T 02 02	£10.31
25 x 1/2 " x 25	250 25 T 02 01	£10.31
25 x 3/4 " x 25	250 25 T 02 02	£17.01
25 x 1 " x 25	250 25 T 02 03	£17.01
32 x 3/4 " x 32	250 32 T 02 02	£17.01
32 x 1 " x 32	250 32 T 02 03	£22.33
40 x 1 1/2 " x 40	250 40 T 02 05	£36.21
50 x 1 1/2 " x 50	250 50 T 02 05	£39.15
50 x 2 " x 50	250 50 T 02 06	£47.24
63 x 2 " x 63	250 63 T 02 06	£66.20
63 x 2 1/2 " x 63	250 63 T 02 07	£66.28
75 x 2 " x 75	350 75 T 02 06	£124.59
75 x 2 1/2 " x 75	350 75 T 02 07	£124.59
75 x 3 " x 75	350 75 T 02 08	£124.59
90 x 3 " x 90	350 90 T 02 08	£148.74
110 x 4 " x 110	351 10 T 02 14	£270.83

COMPRESSION FITTINGS - PN16 250/350 SERIES

REDUCING TEE



SIZE	CODE	PRICE
20 x 16 x 20	250 20 T 00 16	£14.63
25 x 20 x 25	250 25 T 00 20	£21.30
32 x 25 x 32	250 32 T 00 25	£31.13
40 x 32 x 40	250 40 T 00 32	£51.21
50 x 40 x 50	250 50 T 00 40	£74.34
63 x 25 x 63	250 63 T 00 25	£89.64
63 x 32 x 63	250 63 T 00 32	£89.64
63 x 50 x 63	250 63 T 00 50	£89.64
75 x 63 x 75	350 75 T 00 63	£180.72
90 x 75 x 90	350 90 T 00 75	£249.62
110 x 90 x 110	351 10 T 00 90	£507.10



COMPRESSION FITTINGS - PN16 250/350 SERIES

STOPCOCK



Features

- ✓ Mechanism cannot be dismantled during operation
- ✓ Excellent flow characteristics
- ✓ Sensible pressure drop to the minimum
- ✓ Provides excellent flow control due to fine tuning cartridge
- ✓ Conform to sanitary and hygiene requirements
- ✓ Designed to withstand severe outdoor conditions with extensive lifespan
- ✓ Use of top class raw materials for better pressure resistance
- ✓ Proven leak-free secured system

SIZE	CODE	PRICE
20 x 20	170 20 VST 00 20	£37.74
25 x 25	170 25 VST 00 25	£53.53
32 x 32	170 32 VST 00 32	£82.91

COMPRESSION FITTINGS - PN16 250/350 SERIES

ELBOW



SIZE	CODE	PRICE
16 x 16	250 16 Z 00 16	£5.73
20 x 20	250 20 Z 00 20	£7.91
25 x 25	250 25 Z 00 25	£11.66
32 x 32	250 32 Z 00 32	£19.15
40 x 40	250 40 Z 00 40	£38.00
50 x 50	250 50 Z 00 50	£40.61
63 x 63	250 63 Z 00 63	£53.89
75 x 75	350 75 Z 00 75	£153.55
90 x 90	350 90 Z 00 90	£196.19
110 x 110	351 10 Z 01 10	£321.64



COMPRESSION FITTINGS - PN16 250/350 SERIES

THREADED MALE ELBOW



SIZE	CODE	PRICE
20 x 1/2 "	250 20 Z 01 01	£5.74
20 x 3/4 "	250 20 Z 01 02	£5.74
25 x 1/2 "	250 25 Z 01 01	£6.71
25 x 3/4 "	250 25 Z 01 02	£6.71
25 x 1 "	250 25 Z 01 03	£6.71
32 x 1 "	250 32 Z 01 03	£11.33
40 x 1 1/2 "	250 40 Z 01 05	£19.27
50 x 1 1/2 "	250 50 Z 01 05	£26.50
50 x 2 "	250 50 Z 01 06	£26.50
63 x 2 "	250 63 Z 01 06	£32.55
63 x 2 1/2	250 63 Z 01 07	£32.55
75 x 2 1/2 "	350 75 Z 01 07	£91.99
75 x 3 "	350 75 Z 01 08	£96.30
90 x 3 "	350 90 Z 01 08	£94.46
110 x 4 "	351 10 Z 01 14	£121.31



COMPRESSION FITTINGS - PN16 250/350 SERIES

THREADED FEMALE ELBOW



SIZE	CODE	PRICE
20 x 1/2 "	250 20 Z 02 01	£7.84
20 x 3/4 "	250 20 Z 02 02	£7.84
25 x 1/2 "	250 25 Z 02 01	£10.31
25 x 3/4 "	250 25 Z 02 02	£10.31
25 x 1 "	250 25 Z 02 03	£10.31
32 x 3/4 "	250 32 Z 02 02	£16.62
32 x 1 "	250 32 Z 02 03	£16.62
40 x 1 1/2 "	250 40 Z 02 05	£33.47
50 x 1 1/2 "	250 50 Z 02 05	£37.47
50 x 2 "	250 50 Z 02 06	£37.47
63 x 2 "	250 63 Z 02 06	£47.03
63 x 2 1/2 "	250 63 Z 02 07	£47.03
75 x 2 1/2 "	350 75 Z 02 07	£129.98
75 x 3 "	350 75 Z 02 08	£136.40
90 x 3 "	350 90 Z 02 08	£165.99
110 x 4 "	351 10 Z 02 14	£272.08



COMPRESSION FITTINGS - PN16 250/350 SERIES

WALL ELBOW



SIZE	CODE	PRICE
20 x 1/2"	250 20 W 02 01	£16.02
25 x 3/4"	250 25 W 02 02	£21.36

The PN16 250/350 Series wall elbows are designed for quick and reliable pipe connections, commonly used in residential, commercial, and agricultural water systems.

They allow for a smooth directional change in pipe work while securely anchoring to a wall or surface, reducing strain on the piping system.

Made from high-quality polypropylene, the wall elbow offers excellent resistance to corrosion, UV exposure, and harsh environmental conditions.

The compression mechanism ensures a tight seal without the need for adhesives or welding, making it a preferred choice for both permanent and temporary installations.

COMPRESSION FITTINGS - PN16 250/350 SERIES

FLANGED ADAPTOR COMPLETE



SIZE	CODE	PRICE
50 x 1 1/2" (DN40)	250 50 F 00 05	£68.17
50 x 2" (DN50)	250 50 F 00 06	£68.17
63 x 2" (DN50)	250 63 F 00 06	£105.37
63 x 2 1/2" (DN50)	250 63 F 00 07	£110.12
75 x 2 1/2" (DN65)	350 75 F 00 07	£122.94
75 x 3" (DN80)	350 75 F 00 08	£128.50
90 x 3" (DN80)	350 90 F 00 08	£144.71
90 x 4" (DN100)	350 90 F 00 14	£144.71
110 x 4" (DN100)	351 10 F 00 14	£180.92



COMPRESSION FITTINGS - PN16 250/350 SERIES

LINE END



SIZE	CODE	PRICE
25	2502550120	£10.12
32	2503250120	£14.69
40	2504050120	£22.90
50	2505050120	£30.55
63	2506350120	£51.21
75	3507550120	£66.44
90	3509050120	£90.22
110	3511050120	£107.43



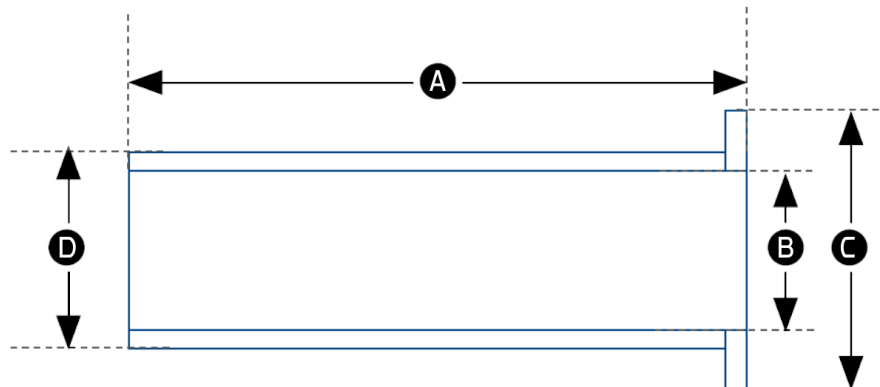
PIPE LINERS

PIPE LINERS



SIZE	CODE	PRICE
20mm	250 20 LN 00 20	0.54p
25mm	250 20 LN 00 25	0.55p
32mm	250 20 LN 00 32	0.91p

Measurements



SIZE	A	B	C	D
20mm	67.5	13.85	18.9	10.9
25mm	70.5	19.2	23.9	16.2
32mm	82.7	25.8	32.1	22.75

UNIVERSAL FITTINGS

The Unifit product components are designed to seal the various diameters of material pipes and are especially designed for the water transportation industry.

The fittings are suitable for different pipe diameters and for tubes of different kind of materials (metal and plastics).

The Unifit provides means of connecting Polyethylene pipes to a variety of plumbing pipe materials, using push-fit technology for fast connection.

Pipes made of materials such as Copper, Polybutylene and PEX can be inserted through the push-fit side of the fitting ensuring optimum sealing and gripping of the system.

Polyethylene pipes are inserted from the other side of the fitting which is operated with our 250 series mechanical fastening mechanism.

Features

- ✓ The connector has a particularly flexible mechanism allowing connections to diameters in the 15-34mm range.
- ✓ Double sealing - hydraulic and mechanical.
- ✓ Working pressure: PN16.

UNIVERSAL FITTINGS



SIZE	CODE	PRICE
Unifit coupling PE 20mm to Universal 15-22mm	250 15 M 50 20	£18.74
Unifit coupling PE 25mm to Universal 15-22mm	250 15 M 50 25	£23.50
Unifit coupling PE 25mm to Universal 20-27mm	250 21 M 50 25	£25.13
Unifit coupling PE 32mm to Universal 20-27mm	250 21 M 50 32	£33.14
Unifit coupling PE 25mm to Universal 27-34mm	250 27 M 50 25	£33.14
Unifit coupling PE 32mm to Universal 27-34mm	250 27 M 50 32	£37.99

COMPRESSION FITTINGS - PN10 250 SERIES

90 DEGREE BEND



SIZE	CODE	PRICE
16 X 16	25016Z1016	£2.27
20 x 20	25020Z1020	£2.30
25 X 25	25025Z1025	£2.75
32 x 32	25032Z1032	£3.46
40 x 40	25040Z1040	£6.43
50 x 50	25050Z1050	£8.59
63 x 63	25063Z1063	£11.61

COMPRESSION FITTINGS - PN10 250 SERIES

MALE THREADED ELBOW



SIZE	CODE	PRICE
20 x 1/2"	25020Z 1101	£1.67
20 x 3/4"	25020Z 1102	£1.68
16 X 1/2"	25016Z1101	£2.00
16 x 3/4"	25016Z1102	£2.00
25 x 1/2"	25025Z 1101	£2.05
25 X 3/4"	25025Z 1102	£2.05
25 x 1"	25025Z1103	£2.05
32 X 3/4"	25032Z1102	£2.48
32 X 1"	25032Z1103	£2.48
40 X 1 1/2"	25040Z 1105	£4.21
50 x 2"	25050Z 1106	£5.94
63 X 2"	25063Z 1106	£8.05

COMPRESSION FITTINGS - PN10 250 SERIES

FEMALE THREADED ELBOW



SIZE	CODE	PRICE
16 X 1/2"	25016Z1201	TBA
16 x 3/4"	25016Z3402	TBA
20 x 1/2"	25020Z1201	£1.78
20 x 3/4"	25020Z1202	£1.78
25 x 1/2"	25020Z1201	POA
25 x 3/4"	25025Z1202	£2.32
25 x 1"	25025Z1203	£2.32
32 x 3/4"	25032Z1202	£2.70
32 x 1"	25032Z1203	£2.70
40 x 1 1/2"	25040Z1205	£5.83
50 X 1 1/2"	25050Z1205	£7.99
50 x 2"	25050Z1206	£7.99

COMPRESSION FITTINGS - PN10 250 SERIES

COUPLING



SIZE	CODE	PRICE
16 X 16	25016M1016	£2.21
20 x 20	25020M1020	£2.16
25 x 25	25025M1025	£2.59
32 x 32	25032M1032	£3.35
40 x 40	25040M1040	£5.94
50 x 50	25050M1050	£7.83
63 x 63	25063M1063	£11.23

COMPRESSION FITTINGS - PN10 250 SERIES

REDUCING COUPLING



SIZE	CODE	PRICE
25 - 20	25025D1020	£2.70
32 - 20	25032D1020	£3.40
32 - 25	25032D1025	£3.40
40 - 32	25040D1032	£6.21
50 - 40	25050D1040	£8.32
50 - 32	25050D1032	£9.29
63 - 50	25063D1050	£11.45

COMPRESSION FITTINGS - PN10 250 SERIES

MALE ADAPTOR



SIZE	CODE	PRICE
16 X 1/2"	25016M1101	£1.51
16 X 3/4"	25016M1102	£1.51
20 X 1/2"	25020M1101	£1.24
20 X 3/4"	25020M1102	£1.30
25 X 1/2"	25025M1101	£1.40
25 X 3/4"	25025M1102	£1.40
25 X 1"	25025M1103	£1.40
32 X 3/4"	25032M1102	£1.89
32 X 1"	25032M1103	£1.89
40 X 1"	25040M1103	£3.73
40 X 1 1/2"	25040M1105	£3.73
50 X 1 1/2"	25050M1105	£4.70
50 X 2"	25050M1106	£4.70
63 X 2"	25063M1106	£6.43

COMPRESSION FITTINGS - PN10 250 SERIES

FEMALE ADAPTOR



SIZE	CODE	PRICE
16 X 1/2"	25016M1201	£1.62
16 X 3/4"	25016M1202	£1.62
20 X 1/2"	25020M1201	£1.40
20 X 3/4"	25020M1202	£1.40
25 X 3/4"	25025M1202	£1.67
25 X 1"	25025M1203	£1.67
32 X 3/4"	25032M1202	£2.11
32 X 1"	25032M1203	£2.11
40 X 1"	25040M1203	£4.10
40 X 1 1/2"	25040M1205	£4.10
50 X 1 1/2"	25050M1205	£5.45
50 X 2"	25050M1206	£5.45
63 X 2"	25063M1206	£7.78

COMPRESSION FITTINGS - PN10 250 SERIES

EQUAL TEE



SIZE	CODE	PRICE
16 X 16 X 16	25016T1016	£3.24
20 X 20 X 20	25020T1020	£3.86
25 X 25 X 25	25025T1025	£3.83
32 X 32 X 32	25032T1032	£4.86
40 X 40 X 40	25040T1040	£9.07
50 X 50 X 50	25050T1050	£12.10
63 X 63 X 63	25063T1063	£17.66

COMPRESSION FITTINGS - PN10 250 SERIES

MALE TEE



SIZE	CODE	PRICE
20 X 3/4 X 20	25020T1102	£2.54
25 X 1/2 X 25	25025T1101	£3.19
25 X 3/4 X 25	25025T1102	£3.19
32 X 3/4 X 32	25032T1102	£4.27
32 X 1 X 32	25032T1103	£4.27
40 X 1 X 40	25040T1103	£7.29
40 X 1 1/2 X 40	25040T1105	£7.29
50 X 1 1/2 X 50	25050T1105	£10.21
50 X 2 X 50	25050T1106	£10.21
63 X 2 X 63	25063T1106	£16.25

COMPRESSION FITTINGS - PN10 250 SERIES

FEMALE TEE



SIZE	CODE	PRICE
16 X 1/2 X 16	25016T1201	£2.86
16 X 3/4 X 16	25016T1202	£2.86
20 X 1/2 X 20	25020T1201	£2.65
20 X 3/4 X 20	25020T1202	£2.65
25 X 1/2 X 25	25025T1201	£3.19
25 X 3/4 X 25	25025T1202	£3.19
25 X 1 X 25	25025T1203	£3.09
32 X 3/4 X 32	25032T1202	£4.37
32 X 1 X 32	25032T1203	£4.43
40 X 1 1/2 X 40	25040T1205	£8.86
50 X 1 1/2 X 50	25050T1205	£11.23
50 X 2 X 50	25050T1206	£11.23
63 X 2 X 63	25063T1206	£16.74

COMPRESSION FITTINGS - PN10 250 SERIES

REDUCING TEE



SIZE	CODE	PRICE
20 X 16 X 20	25020T1016	£3.67
25 X 20 X 25	25025T1020	£3.94
32 X 25 X 32	25032T1025	£5.02
40 X 32 X 40	25040T1032	£9.34
50 X 40 X 50	25050T1040	£12.10
63 X 50 X 63	25063T1050	£17.66

COMPRESSION FITTINGS - PN10 250 SERIES

END PLUG



SIZE	CODE	PRICE
25mm	2502551120	£1.73
32mm	2503251120	£2.16
40mm	2504051120	£3.83
50mm	2505051120	£5.40
63mm	2506351120	£7.51

COMPRESSION FITTINGS - PN10 250 SERIES

WALL ELBOW CONNECTOR



SIZE	CODE	PRICE
20 X 1/2"	25020W0201	£3.13
25 X 3/4"	25025W0202	£7.99

POP UP ELBOW CONNECTOR



SIZE	CODE	PRICE
25 X 25 X 1/2"	25025Z8201	£5.02

ELECTROFUSION FITTINGS

COUPLER 4MM PIN



SIZE	CODE	PRICE
20mm	CBKHFA20	£10.25
25mm	CBKHFA25	£10.25
32mm	CBKHFA32	£10.25
40mm	CBKHFA40	£15.35
50mm	CBKHFA50	£15.81
63mm	CBKHFA63	£19.01
75mm	CBKHFA75	£29.15
90mm	CBKHFA90	£29.43
110mm	CBKHFA110	£45.09

ELECTROFUSION FITTINGS

END CAP 4MM PIN



SIZE	CODE	PRICE
20mm	ECBKHFA20	£18.21
25mm	ECBKHFA25	£19.49
32mm	ECBKHFA32	£21.34
40mm	ECBKHFA40	£24.81
50mm	ECBKHFA50	£36.29
63mm	ECBKHFA63	£41.05
75mm	ECBKHFA75	£74.99
90mm	ECBKHFA90	£84.51
110mm	ECBKHFA110	£121.44

ELECTROFUSION FITTINGS

90 DEGREE ELBOW 4MM PIN



SIZE	CODE	PRICE
20mm	EBKHFA20X90	£23.95
25mm	EBKHFA25X90	£23.95
32mm	EBKHFA32X90	£23.95
40mm	EBKHFA40X90	£34.21
50mm	EBKHFA50X90	£46.95
63mm	EBKHFA63X90	£50.04
75mm	EBKHFA75X90	£67.82
90mm	EBKHFA90X90	£71.41
110mm	EBKHFA110X90	£108.09

ELECTROFUSION FITTINGS

45 DEGREE ELBOW 4MM PIN



SIZE	CODE	PRICE
20mm	EBKHFA20X45	POA
25mm	EBKHFA25X45	POA
32mm	EBKHFA32X45	£22.81
40mm	EBKHFA40X45	£32.04
50mm	EBKHFA50X45	£37.44
63mm	EBKHFA63X45	£49.95
75mm	EBKHFA75X45	£67.69
90mm	EBKHFA90X45	£74.72
110mm	EBKHFA110X45	£110.45

ELECTROFUSION FITTINGS

EQUAL TEE 4MM PIN



SIZE	CODE	PRICE
20mm	ETBKHFA20	£22.50
25mm	ETBKHFA25	£22.26
32mm	ETBKHFA32	£23.95
40mm	ETBKHFA40	£37.11
50mm	ETBKHFA50	£45.27
63mm	ETBKHFA63	£50.85
75mm	ETBKHFA75	£76.55
90mm	ETBKHFA90	£87.75
110mm	ETBKHFA110	£131.23

ELECTROFUSION FITTINGS

REDUCER 4MM PIN



SIZE	CODE	PRICE
20x16	RBKHAF25X16	£10.30
25x20	RBKHAF25X20	£10.30
32x16	RBKHAF32X16	£12.03
32x20	RBKHAF32X20	£10.30
32x25	RBKHAF32X25	£12.03
40x32	RBKHAF49X32	£21.01
50x32	RBKHAF50X32	£30.45
50x40	RBKHAF50X40	£30.45
63x32	RBKHAF63X32	£30.37
63x40	RBKHAF63X40	£30.37
63x50	RBKHAF63X50	£30.37
75x63	RBKHAF75X63	£34.58
90x63	RBKHAF90X63	£39.06
110x63	RBKHAF110X63	£54.93
110x90	RBKHAF110X90	£54.93

ELECTROFUSION FITTINGS

REDUCING TEE 4MM PIN



SIZE	CODE	PRICE
20x32mm	RTBKHFA20X32	£31.66
25x32mm	RTBKHFA25X32	£33.23
50x40mm	RTBKHFA50X40	£49.25
63x32mm	RTBKHFA63X32	£48.44
63x40mm	RTBKHFA63X40	£46.13
63x50mm	RTBKHFA63X50	£48.44
90x63mm	RTBKHFA90X63	£98.37
110x63mm	RTBKHFA110X63	£138.03
110x90mm	RTBKHFA110X90	£138.03

TAPS, VALVES AND BALL VALVES

NYLON DOUBLE BIBCOCK STAINLESS STEEL HANDLE



SIZE	CODE	PRICE
½ INLET x ¾ OUTLET x ¾ VALVE	170-DTP0101-N	£26.84

NYLON DOUBLE BIBCOCK BRASS THREAD PLASTIC HANDLE



SIZE	CODE	PRICE
½ INLET x ¾ OUTLET x ¾ VAVE	170-DTP0101-B	£24.84

TAPS, VALVES AND BALL VALVES

NYLON BIBCOCK, BRASS THREAD STAINLESS STEEL HANDLE



SIZE	CODE	PRICE
½ THREAD	170-TPB0101-N	£16.09
¾ THREAD	170-TPPB0202-N	£20.36

NYLON BIBCOCK BRASS THREAD PLASTIC HANDLE



SIZE	CODE	PRICE
½ THREAD	170-TPB0101-B	£13.50
¾ THREAD	170-TPPB0202-B	£17.71

TAPS, VALVES AND BALL VALVES

NYLON BIBCOCK PLASTIC THREAD PLASTIC HANDLE



SIZE	CODE	PRICE
½ THREAD	170-TPP0101-B	£9.99
¾ THREAD	170-TPP-0202-B	£11.34

NYLON BALL VALVE MALE TO FEMALE THREAD STAINLESS STEEL HANDLE



SIZE	CODE	PRICE
½ THREAD	170-VLFM0101-N	£11.99
¾ THREAD	170-VLFM0202-N	£16.52
1 THREAD	170-VLFM0303-N	£23.76
2 THREAD	170-VLFM0606-N	£100.98

TAPS, VALVES AND BALL VALVES

NYLON BALL VALVE MALE TO FEMALE THREAD PLASTIC HANDLE



SIZE	CODE	PRICE
½ THREAD	170-VLFM0101-B	£9.88
¾ THREAD	170-VLFM0202-B	£13.99
1 THREAD	170-VLFM0303-B	£20.68

NYLON BALL VALVE FEMALE TO FEMALE THREAD STAINLESS STEEL HANDLE



SIZE	CODE	PRICE
½ THREAD	170-VLFF0101-N	£11.99
¾ THREAD	170-VLFF0202-N	£16.52
1 THREAD	170-VLFF0303-N	£23.76
1 ¼ THREAD	170-VLFF0404-N	£54.92
1 ½ THREAD	170-VLFF0505-N	£81.82
2 THREAD	170-VLFF0606-N	£100.98

TAPS, VALVES AND BALL VALVES

NYLON BALL VALVE FEMALE TO FEMALE THREAD PLASTIC HANDLE



SIZE	CODE	PRICE
½ THREAD	170-VLFF0101-B	£9.88
¾ THREAD	170-VLFF0202-B	£13.99
1 THREAD	170-VLFF0303-B	£20.68

COMPACT PVC VALVE MALE TO FEMALE THREAD



SIZE	CODE	PRICE
¾ THREAD	170-PV1FM0202	£4.59
1 THREAD	170-PV1FM0303	£7.24
1 ½ THREAD	170-PV1FM0505	£16.69
2 THREAD	170-PV1FM0606	£26.08

TAPS, VALVES AND BALL VALVES

COMPACT PVC VALVE FEMALE TO FEMALE THREAD



SIZE	CODE	PRICE
¾ THREAD	170-PV1FF0202	£4.59
1 ½ THREAD	170-PV1FF0505	£11.61
2 THREAD	170-PV1FF0606	£19.06

SINGLE UNION PVC VALVE MALE TO FEMALE THREAD



SIZE	CODE	PRICE
¾ THREAD	170-PV2FM0202	£6.26
1 ½ THREAD	170-PV2FM0505	£25.92
2 THREAD	170-PV2FM0606	£39.75

TAPS, VALVES AND BALL VALVES

SINGLE UNION PVC VALVE FEMALE TO FEMALE THREAD



SIZE	CODE	PRICE
3/4 THREAD	170-PV2FF0202	£10.04
1 THREAD	170-PV1FF0505	POA
2 THREAD	170-PV2FF0606	£55.19

ANGLE SEAT VALVE MALE TO MALE



SIZE	CODE	PRICE
1"	170-DVMM0303	£7.10
1 1/2"	170-DVMM0505	£10.90
2"	170-DVMM0606	£12.90

SADDLES

Saddles are used for splits, junctions and for adding lines to a main line and are designed for use with all kinds of pipes.

The saddles arrive 'Ready-to-Instal' as the bolts and seals are already assembled in the saddle. simply fit the saddle and tighten the bolts.

Technical Specifications

All saddles comply with the dimensional requirements and characteristics of the relevant standard EN ISO 13460.

Threads (BSP) are manufactured according to EN 10226, ISO 7 and DIN 2999

Working pressure: PN10

SADDLES

SADDLE - 2 BOLTS NO METAL RING



SIZE	CODE	PRICE
25 X ¾ = 150	24025R0202	£2.70
32 X ½ = 110	14032R0201	£2.70
32 X ¾ = 135	24032R0202	£2.70
40 X ½ = 90	24040R0201	£3.08
40 X ¾ = 90	24040R0202	£3.08
40 X 1 = 75	24040R0203	£3.08
50 X ¾ = 50 ** 2/4 BOLT	14050R6202	£4.59
50 X 1 = 50	24050R0203	£4.10
63 X ½ = 30	24063R0201	£5.24
63 X ¾ = 40 ** 2/4 BOLT	14063R6202	£6.37

SADDLES

SADDLE - 4 BOLTS WITH METAL RING



SIZE	CODE	PRICE
50 X 1 = 50	24050R4203	£5.35
63 X 1 = 40	24063R4203	£5.67
63 X 1 ¼ = 20	24063R4204	£9.34
63 X 1 ½ = 30	24063R4205	£9.34
75 X ¾ = 30	24075R4202	£6.97
75 X 1 = 30	24075R4203	£6.97
75 X 1 ½ = 25	24075R4205	£10.31
75 X 2 = 20	24075R4206	£10.31
90 X ¾ = 25	24090R4202	£8.96
90 X 1 = 20	24090R4203	£8.96
90 X 1 ½ = 15	24090R4205	£12.64
90 X 2 = 20	24090R4206	£12.64
110 X ¾ = 20	24110R4202	£13.23
110 X 1 = 15	24110R4203	£13.23
110 X 1 ½ = 20	24110R4205	£15.93

SADDLES

SADDLE - 6 BOLTS WITH METAL RING



SIZE	CODE	PRICE
125 X 3 = 10	24125R4208	£27.22
140 X 1 = 10	24140R6203	£27.22
140 X 2 = 10	24140R6206	£33.16
160 X 1 ½ = 20	24160R6205	£38.77
160 X 2 = 10	24160R6206	£38.77

SELF SEAL PVC BSP THREADED FITTINGS

A range of quality BSP threaded fittings made from Polypropylene and 16 bar rated. The Plas-fit self seal threaded fittings range has the unique self seal, pre-assembled O-rings that saves labour and Teflon and allows tightening without tools.

FEATURES

Extra strong design and excellent mechanical properties for long life, durability and resistance to breakage

Wide grip for easy assembly

Plas-fit UK threaded fittings are available with the unique self seal system (pre-assembled o-rings) that saves labour and allows tightening without tools

SPECIFICATION

Material: Polypropylene

O-Ring: EPDM

Maximum operating pressure: 1600 kPa at 20°C

Maximum working temperature: 100°C

Threads: BSP

15mm to 50mm sizes available

O-Ring seal on male and female ends of fittings

SELF SEAL PVC BSP THREADED FITTINGS

NIPPLE



SIZE	CODE	PRICE
1/2" x 1/2"	N125	£0.44
3/4" x 3/4"	N345	£0.55
1" x 1"	N15	£1.21
1 1/4" x 1 1/4"	N1145	£2.42
1 1/2" x 1 1/2"	N1125	£2.86
2" x 2"	N25	£3.85

SELF SEAL PVC BSP THREADED FITTINGS

REDUCING NIPPLE



SIZE	CODE	PRICE
1/2" x 3/4"	N12345	£0.50
1" x 1/2"	N10125	£1.10
1" x 3/4"	N1345	£1.10
1" x 1 1/4"	N11145	£2.26
3/4" x 1 1/4"	N114345	£2.26
1 1/4" x 1 1/2"	N1141125	£2.64
1" x 1 1/2"	N11125	£2.64
1 1/2" x 1/2"	N112125	£2.64
2" x 1"	N215	£3.30
2" x 1 1/4"	N21145	£3.30
2" x 1 1/2"	N21125	£3.74

SELF SEAL PVC BSP THREADED FITTINGS

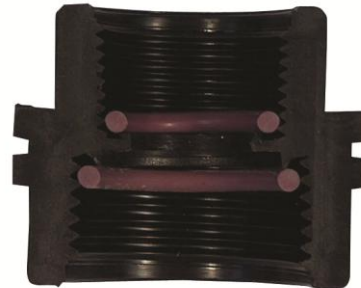
FEMALE COUPLING



SIZE	CODE	PRICE
1/2"X1/2"	FC125	£0.90
3/4"X3/4"	FC345	£1.27
1"X1"	FC15	£1.43
1 1/4"X1 1/4"	FC1145	£2.48
1 1/2"X1 1/2"	FC1125	£5.06
2"X2"	FC25	£7.26

SELF SEAL PVC BSP THREADED FITTINGS

REDUCING FEMALE COUPLING



SIZE	CODE	PRICE
1/2" x 3/4"	FC12345	£1.21
1" x 3/4"	FC1345	£1.38
1 1/4" x 1"	FC11145	£2.42
1" x 1 1/2"	FC11125	£4.73
3/4" x 1 1/2"	FC112345	£4.73
1 1/2" x 1 1/4"	FC1121145	£4.95
2" x 3/4"	FC2345	£6.55
2" x 1"	FC215	£6.60
2" x 1 1/4"	FC21145	£7.15
2" x 1 1/2"	FC21125	£6.99

SELF SEAL PVC BSP THREADED FITTINGS

PLUG



SIZE	CODE	PRICE
1/2"	PM125	£0.44
3/4"	PM345	£0.50
1"	PM15	£1.21
1 1/4"	PM1145	£2.09
1 1/2"	PM1125	£2.26
2"	PM25	£2.64

SELF SEAL PVC BSP THREADED FITTINGS

END CAP



SIZE	CODE	PRICE
1/2"	CF12S	£0.55
3/4"	CF34S	£0.66
1"	CF1S	£0.99
3/4" NPT	CF34AS	£0.66
1" NPT	CF1AS	£0.99
1 1/4"	CF114S	£1.43
1 1/2"	CF112S	£1.65
2"	CF2S	£3.69
3"	CF3S	£11.88

SELF SEAL PVC BSP THREADED FITTINGS

ELBOW MALE TO FEMALE THREAD



SIZE	CODE	PRICE
1/2" M x 1/2" F	EMF125	£1.87
3/4" M x 3/4" F	EMF345	£2.42
1" M x 1" F	EMF15	£2.86

TEE FEMALE THREAD



SIZE	CODE	PRICE
1/2" x 1/2" x 1/2"	TF125	£2.53
3/4" x 3/4" x 3/4"	TF345	£3.14
1" x 1" x 1"	TF15	£3.47
1 1/4" x 1 1/4" x 1 1/4"	TF1145	£6.77
1 1/2" x 1 1/2" x 1 1/2"	TF1125	£7.70
2" x 2" x 2"	TF25	£12.93

SELF SEAL PVC BSP THREADED FITTINGS

REDUCING BUSH FEMALE TO MALE



SIZE	CODE	PRICE
1/2"M x 3/4"F	BFM34125	£0.94
3/4"M x 3/4"F	BFM345	£1.71
1"M x 1"F	BFM15	£2.04
1/2"M x 1"F	BFM10125	£2.04
3/4"M x 1"F	BFM1345	£2.04
1"M x 1 1/4"F	BFM11415	£2.42
1/2"M x 1 1/4"F	BFM114125	£2.42
3/4"M x 1 1/4"F	BFM114345	£2.42
1 1/2"M x 1 1/2"F	BFM1125	£3.08
3/4"M x 1 1/2"F	BFM112345	£2.86
1"M x 1 1/2"F	BFM11215	£2.92
1 1/4"M x 1 1/2"F	BFM1121145	£2.97
3/4"M x 2"F	BFM2345	£4.24
1"M x 2"F	BFM215	£4.24
2"M x 2"F	BFM25	£4.24
1 1/2"M x 2"F	BFM21125	£4.40

SELF SEAL PVC BSP THREADED FITTINGS

REDUCING BUSH MALE TO FEMALE



SIZE	CODE	PRICE
3/4" M x 1/2" F	BMF34125	£0.66
1" M x 1/2" F	BMF10125	£0.94
1" M x 3/4" F	BMF1345	£0.94
1 1/4" M x 1/2" F	BMF114125	£1.93
1 1/4" M x 3/4" F	BMF114345	£1.93
1 1/4" M x 1" F	BMF11415	£1.93
1 1/2" M x 1/2" F	BMF112125	£1.98
1 1/2" M x 3/4" F	BMF112345	£1.98
1 1/2" M x 1" F	BMF11215	£1.98
1 1/2" M x 1 1/4" F	BMF1121145	£1.98
2" M x 1/2" F	BMF2125	£2.64
2" M x 3/4" F	BMF2345	£2.64
2" M x 1" F	BMF215	£2.64
2" M x 1 1/4" F	BMF21145	£2.64
2" M x 1 1/2" F	BMF21125	£2.64

SELF SEAL PVC BSP THREADED FITTINGS

ELBOW - FEMALE THREAD



SIZE	CODE	PRICE
1/2" x 1/2"	EF125	£2.37
3/4" x 3/4"	EF345	£2.75
1" x 1"	EF15	£3.08
1 1/4" x 1 1/4"	EF1145	£6.05
1 1/2" x 1 1/2"	EF1125	£7.15
2" x 2"	EF25	£11.50

PLUG O-RING



SIZE	CODE	PRICE
3/4"	PM34OR5	£3.22
1 1/2"	PM112OR5	£6.55
2"	PM2OR5	£6.75

SELF SEAL PVC BSP THREADED FITTINGS

TEE - MALE THREAD



SIZE	CODE	PRICE
3/4" x 3/4" x 3/4"	NLT34M5	£1.65
3/4" x 1/2" x 3/4"	NLT3412M5	£1.65
1" x 1" x 1"	NLT1M5	£2.42
1" x 3/4" x 1"	NLT134M5	£2.42
3/4" x 1" x 3/4"	NLT341M5	£2.42
1" x 1/2" x 1"	NLT1012M5	£2.42

TEE - FEMALE SWIVEL



SIZE	CODE	PRICE
3/4"M x 3/4"F x 3/4"M	NLT3455	£2.81
1"M x 1"F x 1"M	NLT155	£4.02

SELF SEAL PVC BSP THREADED FITTINGS

ELBOW - FEMALE SWIVEL



SIZE	CODE	PRICE
3/4" M x 3/4" F x 3/4" M	NLT3455	£2.81
1" M x 1" F x 1" M	NLT155	£4.02

ELBOW - MALE THREAD



SIZE	CODE	PRICE
3/4"	NLE34MS	£1.49
3/4" x 1/2"	NLE3412MS	£1.60
1"	NLE1MS	£2.15
1" x 3/4"	NLE134MS	£2.15
1" x 1/2"	NLE1012MS	£2.15

TOOLS AND SPARE PARTS

CHAMFERING TOOL



SIZE	CODE	PRICE
16 - 63	150 63 0 00 00	£48.60
16 - 63	150 63 0 00 00	£48.60

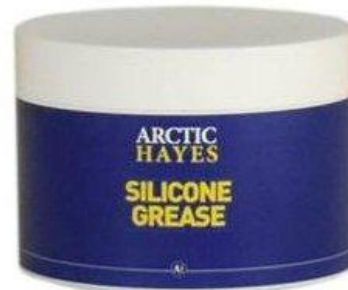
WRENCH



SIZE	CODE	PRICE
16 - 40mm	1502500006	£10.80
40 - 75mm	1504000005	£88.66
40 - 110mm	1506300005	£97.85

TOOLS AND SPARE PARTS

SILICONE GREASE



SIZE	CODE	PRICE
100g	AHSGWA100	£35.10
500g	AHSGWA500	£86.13

PTFE TAPE



SIZE	CODE	PRICE
12mm	52-12A0401	£0.81
19mm	52-19A0401	£2.65

TOOLS AND SPARE PARTS

250 SERIES NUT



SIZE	CODE	PRICE
16mm	250 16 H 05 10	£1.45
20mm	250 20 H 05 10	£1.45
25mm	250 25 H 05 10	£1.45
32mm	250 32 H 05 10	£1.45
40mm	250 40 H 05 10	£1.45
50mm	250 50 H 05 10	£1.45
63mm	250 63 H 05 10	£1.45
75mm	250 75 H 05 10	£1.45
90mm	250 90 H 05 10	£1.45
110mm	251 10 H 05 10	£1.45

TOOLS AND SPARE PARTS

250 SERIES GRIP RING



SIZE	CODE	PRICE
16mm	250 16 H 06 10	£1.65
20mm	250 20 H 06 10	£1.65
25mm	250 25 H 06 10	£1.65
32mm	250 32 H 06 10	£1.65
40mm	250 40 H 06 10	£1.65
50mm	250 50 H 06 10	£1.65
63mm	250 63 H 06 10	£1.65
75mm	250 75 H 06 10	£1.65
90mm	250 90 H 06 10	£1.65
110mm	250 10 H 06 10	£1.65

TOOLS AND SPARE PARTS

PIPE SHEARS



SIZE	CODE	PRICE
20 - 32mm	PS20-32000	£66.76
20 - 63mm	PS20-63000	£159.50

PIPE HAND SCRAPER



SIZE	CODE	PRICE
Hand scraper	EFHS03800	£47.50

TOOLS AND SPARE PARTS

250/350 SERIES SEALS



SIZE	CODE	PRICE
16mm	520 16 A 26 01	£1.25
20mm	520 20 A 26 01	£1.25
25mm	520 25 A 26 01	£1.25
32mm	520 32 A 26 01	£1.25
40mm	520 40 A 26 01	£1.25
50mm	520 50 A 26 01	£1.25
63mm	520 63 A 26 01	£1.25
75mm	520 75 A 26 01	£1.25
90mm	520 90 A 26 01	£1.25
110mm	520 10 A 26 01	£1.25



Plas-fit UK

Unit 18
Whieldon Industrial Estate
Whieldon Road

Stoke on Trent
ST4 4JP

01782 894912

office@plas-fit.co.uk

© Plas-Fit UK. All rights reserved. This catalogue, including all content, images, designs, and product descriptions, is the exclusive property of Plas-Fit UK and is protected under applicable copyright and intellectual property laws. No part of this catalogue may be copied, reproduced, distributed, or used in any form without prior written consent from Plas-Fit UK. Any unauthorised use or reproduction of any part of this catalogue may result in legal action. Product images used are for demonstration purposes only. Actual products may vary slightly in colour and shape.

[\[Back to Contents\]](#)