



PRODUCTS CATALOGUE

All images for demonstration use

CONTENTS

About Plas-Fit UK/Contact Details
Quality Approvals/Certifications/Materials Approval
Exclusive Singular Warranty
Compression Fittings - PN16 250/350 Series
Pipe Liners
Stop Taps
Universal Fittings
Conversion Kits
Electrofusion Fittings
Saddles
Self Seal Threaded Fittings
Compression Fittings - PN10 250 Series
Slip Tees
Swivel Fittings
Nut Lock Fittings
Barb Connectors
DripLine Valves
Filters
EZ Open Valve Boxes
Taps, valves and Ball Valves
Tools and Spare Parts
Address/Disclaimer/Copyright

ABOUT PLAS-FIT UK

Plas-Fit are one of the longest established and most respected manufacturers of Water fittings in the world, tracing ancestry back to the dawn of the modern pipe era in 1960.

Our UK warehouse is based in Stoke on Trent where you will find a massive range of approved, quality water fittings.

We offer a highly efficient delivery service and a wealth of experience from our friendly staff, all of whom have a great reputation in the Water industry.

Our products carry British standards, WRAS approval and other International and European approvals giving peace of mind.

Our technical team are always on hand to assist with any technical questions and our sales team will be pleased to advise on any offers or trade deals currently available.

CONTACT DETAILS

Telephone

01782 894912

Email


office@plas-fit.co.uk

Registered Office

Unit 2, Harvey Works
Lingard Street
Burslem
Stoke On Trent
ST6 1ED

QUALITY APPROVALS

Standard for water supply fittings: Plas-Fit 150, 250 and 350 Series

	Approval	Standard	Diameter (mm)	Pressure Rating (Bar)
UK		Regulation 4 (2)	20 - 110	16
GERMANY		GW 335-B3(P)	20 - 63	16
HOLLAND		BRL-17107	16 - 63, 75	16, 10
SWITZERLAND		SVGW GW2, DIN 8076	16 - 63	16
ISRAEL		SII 5283	16 - 63 75 - 110	16, 10
NORWAY		EN712, EN713, EN715	20 - 63	10
SWEDEN		NKB 18	20 - 63	10
DENMARK		NKB 18	20 - 63	10
HUNGARY		EMI A 24/1985 (XII.28)	16 - 63	16
THE CZECH REPUBLIC		TS-ITC-122/98	16 - 63 75 - 110	16, 10
SLOVAKIA		DIN 8076-3	16 - 63 75 - 110	16, 10
POLAND		DIN 8076-3	16 - 63 75 - 110	16, 10
EUROPE		CE MARK 2014/68/EU		
INTERNATIONAL		ISO 9001		

CERTIFICATIONS



Plas-Fit UK is committed to upholding the highest standards in the water fittings industry, demonstrated by our certifications from SAP and The Pipeline Industries Guild.

Our Certification with SAP (Supplier Approval Programme) validates our adherence to stringent quality and performance criteria, ensuring our products meet regulatory and operational requirements.

Additionally, our affiliation with The Pipeline Industries Guild reflects our dedication to best practices, innovation, and continuous improvement within the sector.

DEMYSTIFYING MATERIALS APPROVAL

FOR POTABLE WATER SYSTEMS: UNDERSTANDING KIWA, NSF, AND WRAS

In the realm of potable water systems, ensuring the safety and quality of materials used is paramount. Our customers often seek reassurance through certifications like WRAS (Water Regulations Approval Scheme) Approval when it comes to non-metallic materials in contact with drinking water (and demonstrating compliance with **UK Water Regulation 4**). However, the landscape of certification bodies can be complex. Let's delve into this topic to shed light on the roles of KIWA Watertec, NSF International, and WRAS.

UNDERSTANDING KIWA WATER TEC AND NSF INTERNATIONAL

KIWA Water Tec and NSF International are ISO 17025 UKAS accredited testing laboratories, and one of their service offerings is testing and certification of plumbing products for potable water systems. They rigorously evaluate products for compliance against standards like **BS 6920**, which defines requirements for the suitability of non-metallic materials in contact with water intended for human consumption. Once products demonstrate meeting or exceeding this standard, KIWA and NSF issue product approval certificates under their own certification schemes, affirming compliance with stringent criteria for maintaining water quality.

THE ROLE OF WRAS

WRAS, formerly known as the Water Regulations Advisory Service, has played a role, but only in the certification process. When products undergo testing (and certification) by KIWA or NSF, WRAS may also review their test results and issue approval certificates under its own WRAS certification scheme.

WATER REGS UK AND THE EVOLUTION OF WRAS

In recent years, WRAS has undergone changes, leading to the emergence of Water Regs UK, with WRAS Ltd (Water Regulations Approvals Scheme) as an owned subsidiary and, recently, a ISO 17065 accredited approvals Certification body. This allows Water Regs UK to focus specifically on regulatory matters, while WRAS Ltd continues to handle product certification.

A CHOICE OF CERTIFICATION SCHEME

When it comes to selecting a test-house/certification body, manufacturers therefore now have several options.

While WRAS Approval remains widely recognised, certifications from KIWA Water Tec and NSF International offer entirely equivalent levels of assurance.

Each is fully accredited to the relevant International Standard as both a Test House and a Certification Body. Meanwhile, WRAS Ltd is accredited solely as a Certification Body. It's important to note that WRAS does not conduct any product testing, a practice that has been consistent even in its previous form.

CONCLUSION

In conclusion, navigating the landscape of material approval for potable water systems requires understanding the roles of certification bodies like KIWA Water Tec, NSF International, and WRAS. While WRAS may oversee the certification process and issues approval certificates, KIWA and NSF conduct rigorous testing and certification under their own schemes. Whether manufacturers choose WRAS, KIWA, or NSF approval, customers can trust in the integrity and safety of materials used in our products for potable water systems.

EXCLUSIVE SINGULAR WARRANTY

We use only the highest quality materials and manufacturing processes for our products, which meet the highest standards.

We warrant that our compression fittings and accessories for polyethylene pipes, when used properly, are free from defect in material and/or workmanship.

We will replace, at our discretion, any product, deemed by us to be defective in material and/or workmanship.

We warrant all our products for up to ten years and after the warranty period, we continue to provide field repair, maintenance and consultation services.

The full exclusive terms of our warranty are as detailed in our basic commercial warranty and the applicable commercial warranty supplement.

We will not be liable for any commitments or agreements made by any of our agents, representatives and/or dealers, and/or any other commitments, other than the aforementioned basic commercial warranty and the applicable commercial warranty supplement.

COMPRESSION FITTINGS - PN16 250/350 SERIES

Plas-Fit UK 250 and 350 Series are designed to provide best performance with competitive pricing, providing easy installation together with high pressure rating of 16 bars.

Features reliable self-locking grip-ring technology, certified by WRAS (UK) and DVGW (Germany) for use of drinking water installations up to PN16.

Technical Specifications

- ✓ Allows easy installation without need to disassemble the fitting
- ✓ Robust, corrosion-resistant and resistant to most chemicals
- ✓ Stands up to tough working conditions, pipe bending and pull-out forces
- ✓ Complies with WRAS, the Israeli institute of standards and the German standard DVGW
- ✓ Working pressure sizes 63-110: PN16



Series 250 (Easy-Seal) Sizes: 40-63mm

Re- designed seals to reduce the required insertion force of the pipe into the fitting. The new seal provides easy assembly with maximum rated pressure of PN16.



Series 350 (Easy System) Sizes: 75-110mm

No force required for inserting the pipe to the fitting. The pipe is simply dropped into the fitting, and the sealing is done during the tightening of the nut. This provides optimal assembly with maximum rated pressure of PN16.

COMPRESSION FITTINGS - PN16 250/350 SERIES

COUPLING



SIZE	CODE	PRICE
16 x 16	25016M0016	£5.13
20 x 20	25020M0020	£6.39
25 x 25	25025M0025	£6.83
32 x 32	25032M0032	£16.08
40 x 40	25040M0040	£34.11
50 x 50	25050M0050	£35.53
63 x 63	25063M0063	£51.91
75 x 75	35075M0075	£88.18
90 x 90	35090M0090	£101.70
110 x 110	35110M0110	£177.29



COMPRESSION FITTINGS - PN16 250/350 SERIES

REPAIR COUPLING



SIZE	CODE	PRICE
25 x 25	25025K0025	£9.26
32 x 32	25032K0032	£20.89
40 x 40	25040K0040	£37.69
50 x 50	25050K0050	£42.64
63 x 63	25063K0063	£59.51
75 x 75	35075K0075	£87.29
90 x 90	35090K0090	£117.79
110 x 110	35110K0110	£201.06



COMPRESSION FITTINGS - PN16 250/350 SERIES

MALE COUPLING



SIZE	CODE	PRICE
16 x 1/2"	25016M0101	£4.24
16 x 3/4"	25016M0102	£4.24
20 x 1/2"	25020M0101	£5.96
20 x 3/4"	25020M0102	£6.38
20 x 1"	25020M0103	£8.91
25 x 1/2"	25025M0101	£7.16
25 x 3/4"	25025M0102	£7.16
25 x 1"	25025M0103	£11.08
32 x 3/4"	25032M0102	£11.08
32 x 1"	25032M0103	£11.08
32 x 1 1/2"	25032M0105	£11.08

CONTINUED...

COMPRESSION FITTINGS - PN16 250/350 SERIES

MALE COUPLING Continued

SIZE	CODE	PRICE
40 x 1"	25040M0103	£21.25
40 x 1½"	25040M0105	£21.25
40 x 2"	25040M0106	£21.25
50 x 1"	25050M0103	£27.15
50 x 1¼"	25050M0104	£27.15
50 x 1½"	25050M0105	£27.15
50 x 2"	25050M0106	£27.15
63 x 1½"	25063M0105	£36.37
63 x 2"	25063M0106	£36.37
63 x 2½"	25063M0107	36.37
75 x 2"	35075M0106	£55.18
75 x 2½"	35075M0107	£55.18
75 x 3"	35075M0108	£55.18
90 x 2"	35090M0106	£74.76
90 x 2½"	35090M0107	£74.76
90 x 3"	35090M0108	£74.76
90 x 4"	35090M0114	£74.76
110 x 2"	35110M0106	£126.68
110 x 3"	35110M0108	£126.68
110 x 4"	35110M0114	£126.68



COMPRESSION FITTINGS - PN16 250/350 SERIES

FEMALE COUPLING



SIZE	CODE	PRICE
16 x 1/2"	25016M0201	£5.11
16 x 3/4"	25016M0202	£5.11
20 x 1/2"	25020M0201	£7.16
20 x 3/4"	25020M0202	£7.16
25 x 1/2"	25025M0201	£7.83
25 x 3/4"	25025M0202	£7.80
25 x 1"	25025M0203	£7.83
32 x 3/4"	25032M0202	£10.55
32 x 1"	25032M0203	£10.55

CONTINUED...

COMPRESSION FITTINGS - PN16 250/350 SERIES

FEMALE COUPLING Continued

SIZE	CODE	PRICE
40 x 1"	25040M0203	£24.50
40 x 1½"	25040M0205	£24.50
50 x 1¼"	25050M0204	£33.39
50 x 1½"	25050M0205	£33.39
50 x 2"	25050M0206	£33.39
63 x 1½"	25063M0205	£41.97
63 x 2"	25063M0206	£41.97
63 x 2½"	25063M0207	£41.97
75 x 2"	35075M0206	£56.39
75 x 2½"	35075M0207	£56.39
75 x 3"	35075M0208	£56.14
90 x 2"	35090M0206	£77.16
90 x 2½"	35090M0207	£77.16
90 x 3"	35090M0208	£77.16
90 x 4"	35090M0214	£77.16
110 x 3"	35110M0208	£162.03
110 x 4"	35110M0214	£162.03



COMPRESSION FITTINGS - PN16 250/350 SERIES

REDUCING COUPLING



SIZE	CODE	PRICE
20 x 16	25020D0016	£11.69
25 x 16	25025D0016	£12.84
25 x 20	25025D0020	£12.84
32 x 20	25032D0020	£21.74
32 x 25	25032D0025	£21.74
40 x 25	25040D0025	£36.84
40 x 32	25040D0032	£36.84
50 x 32	25050D0032	£49.33
50 x 40	25050D0040	£49.33
63 x 32	25063D0032	£62.44
63 x 50	25063D0050	£62.44
75 x 63	35075D0063	£82.03
90 x 63	35090D0063	£108.98
90 x 75	35090D0075	£108.98
110 x 75	35110D0075	£177.25
110 x 90	35110D0090	£187.45



COMPRESSION FITTINGS - PN16 250/350 SERIES

EQUAL TEE



SIZE	CODE	PRICE
16 x 16 x 16	25016T0016	£8.94
20 x 20 x 20	25020T0020	£11.21
25 x 25 x 25	25025T0025	£17.54
32 x 32 x 32	25032T0032	£23.59
40 x 40 x 40	25040T0040	£45.76
50 x 50 x 50	25050T0050	£50.83
63 x 63 x 63	25063T0063	£76.09
75 x 75 x 75	35075T0075	£136.68
90 x 90 x 90	35090T0090	£192.95
110 x 110 x 110	35110T0110	£392.01



COMPRESSION FITTINGS - PN16 250/350 SERIES

THREADED MALE TEE



SIZE	CODE	PRICE
20 x 1/2" x 20	25020T0101	£9.69
20 x 3/4" x 20	25020T0102	£9.69
25 x 1/2" x 25	25025T0101	£15.73
25 x 3/4" x 25	25025T0102	£15.73
32 x 1" x 32	25032T0103	£22.33
40 x 1" x 40	25040T0103	£33.00
40 x 1 1/2" x 40	25040T0105	£33.00
50 x 1 1/2" x 50	25050T0105	£46.64
63 x 2" x 63	25063T0106	£63.15
75 x 2" x 75	35075T0106	£97.33
75 x 2 1/2" x 75	35075T0107	£102.19
75 x 3" x 75	35075T0108	£107.30
90 x 3" x 90	35090T0108	£123.30
110 x 4" x 110	35110T0114	£273.08



COMPRESSION FITTINGS - PN16 250/350 SERIES

THREADED FEMALE TEE



SIZE	CODE	PRICE
16 x 1/2" x 16	25016T0201	£8.05
16 x 3/4" x 16	25016T0202	£8.05
20 x 1/2" x 20	25020T0201	£10.31
20 x 3/4" x 20	25020T0202	£10.31
25 x 1/2" x 25	25025T0201	£17.01
25 x 3/4" x 25	25025T0202	£17.01
25 x 1" x 25	25025T0203	£17.01
32 x 3/4" x 32	25032T0202	£22.33
32 x 1" x 32	25032T0203	£22.33
40 x 1 1/2" x 40	25040T0205	£39.15
50 x 1 1/2" x 50	25050T0205	£47.24
50 x 2" x 50	25050T0206	£47.24
63 x 2" x 63	25063T0206	£66.20
63 x 2 1/2" x 63	25063T0207	£66.28
75 x 2" x 75	35075T0206	£124.59
75 x 2 1/2" x 75	35075T0207	£124.59
75 x 3" x 75	35075T0208	£124.59
90 x 3" x 90	35090T0208	£148.74
110 x 4" x 110	35110T0214	£270.83

COMPRESSION FITTINGS - PN16 250/350 SERIES

REDUCING TEE



SIZE	CODE	PRICE
20 x 16 x 20	25020T0016	£14.63
25 x 20 x 25	25025T0020	£21.30
32 x 25 x 32	25032T0025	£31.13
40 x 32 x 40	25040T0032	£51.21
50 x 40 x 50	25050T0040	£74.34
63 x 25 x 63	25063T0025	£89.64
63 x 32 x 63	25063T0032	£89.64
63 x 50 x 63	25063T0050	£89.64
75 x 63 x 75	35075T0063	£180.72
90 x 75 x 90	35090T0075	£249.62
110 x 90 x 110	35110T0090	£507.10



COMPRESSION FITTINGS - PN16 250/350 SERIES

ELBOW



SIZE	CODE	PRICE
16 x 16	25016Z0016	£5.73
20 x 20	25020Z0020	£7.91
25 x 25	25025Z0025	£11.66
32 x 32	25032Z0032	£19.15
40 x 40	25040Z0040	£38.00
50 x 50	25050Z0050	£40.61
63 x 63	25063Z0063	£53.89
75 x 75	35075Z0075	£153.55
90 x 90	35090Z0090	£196.19
110 x 110	35110Z0110	£321.64



COMPRESSION FITTINGS - PN16 250/350 SERIES

THREADED MALE ELBOW



SIZE	CODE	PRICE
20 x 1/2"	25020Z0101	£5.74
20 x 3/4"	25020Z0102	£5.74
25 x 1/2"	25025Z0101	£6.71
25 x 3/4"	25025Z0102	£6.71
25 x 1"	25025Z0103	£6.71
32 x 1"	25032Z0103	£11.33
40 x 1 1/2"	25040Z0105	£19.27
50 x 1 1/2"	25050Z0105	£26.50
50 x 2"	25050Z0106	£26.50
63 x 2"	25063Z0106	£32.55
63 x 2 1/2"	25063Z0107	£32.55
75 x 2 1/2"	35075Z0107	£91.99
75 x 3"	35075Z0108	£96.30
90 x 3"	35090Z0108	£94.46
110 x 4"	35110Z0114	£121.31



COMPRESSION FITTINGS - PN16 250/350 SERIES

THREADED FEMALE ELBOW



SIZE	CODE	PRICE
20 x 1/2"	25020Z0201	£7.84
20 x 3/4"	25020Z0202	£7.84
25 x 1/2"	25025Z0201	£10.31
25 x 3/4"	25025Z0202	£10.31
25 x 1"	25025Z0203	£10.31
32 x 3/4"	25032Z0202	£16.62
32 x 1"	25032Z0203	£16.62
40 x 1 1/2"	25040Z0205	£33.47
50 x 1 1/2"	25050Z0205	£37.47
50 x 2"	25050Z0206	£37.47
63 x 2"	25063Z0206	£47.03
63 x 2 1/2"	25063Z0207	£47.03
75 x 2 1/2"	35075Z0207	£129.98
75 x 3"	35075Z0208	£136.40
90 x 3"	35090Z0208	£165.99
110 x 4"	35110Z0214	£272.08



COMPRESSION FITTINGS - PN16 250/350 SERIES

WALL ELBOW



SIZE	CODE	PRICE
20 x 1/2"	25020W0201	£16.02
25 x 3/4"	25025W0202	£21.36

The PN16 250/350 Series wall elbows are designed for quick and reliable pipe connections, commonly used in residential, commercial, and agricultural water systems.

They allow for a smooth directional change in pipe work while securely anchoring to a wall or surface, reducing strain on the piping system.

Made from high-quality polypropylene, the wall elbow offers excellent resistance to corrosion, UV exposure, and harsh environmental conditions.

The compression mechanism ensures a tight seal without the need for adhesives or welding, making it a preferred choice for both permanent and temporary installations.

COMPRESSION FITTINGS - PN16 250/350 SERIES

FLANGED ADAPTOR COMPLETE



SIZE	CODE	PRICE
50 x 1½" (DN40)	25050F0005	£68.17
50 x 2" (DN50)	25050F0006	£68.17
63 x 2" (DN50)	25063F0006	£105.37
63 x 2½" (DN50)	25063F0007	£110.12
75 x 2½" (DN65)	35075F0007	£122.94
75 x 3" (DN80)	35075F0008	£128.50
90 x 3" (DN80)	35090F0008	£144.71
90 x 4" (DN100)	35090F0014	£144.71
110 x 4" (DN100)	35110F0014	£180.92



COMPRESSION FITTINGS - PN16 250/350 SERIES

LINE END



SIZE	CODE	PRICE
25	2502550120	£10.12
32	2503250120	£14.69
40	2504050120	£22.90
50	2505050120	£30.55
63	2506350120	£51.21
75	3507550120	£66.44
90	3509050120	£90.22
110	3511050120	£107.43



PIPE LINERS

Pipe liners are essential fittings used to reinforce the ends of polyethylene (PE) pipes, providing a stable and secure connection point for compression fittings.

They help maintain the shape and structural integrity of the pipe, especially under pressure, ensuring a leak-free seal and extending the life of the installation.

Ideal for use in potable water systems and irrigation setups, our pipe liners are manufactured to meet WRAS standards and are compatible with standard MDPE pipe sizes.



SIZE	CODE	PRICE
20mm	25020LN0020	£0.20
25mm	25025LN0025	£0.24
32mm	25032LN0032	£0.36
40mm	25040LN0040	£0.60
50mm	25050LN0050	£0.66
63mm	25063LN0063	£0.79

Pipe liners are sold at net price to customer and include discount.

COMPRESSION FITTINGS - PN16 250/350 SERIES

STOP TAP



Features

- ✓ Mechanism cannot be dismantled during operation
- ✓ Excellent flow characteristics
- ✓ Sensible pressure drop to the minimum
- ✓ Provides excellent flow control due to fine tuning cartridge
- ✓ Confirm to sanitary and hygiene requirements
- ✓ Designed to withstand severe outdoor conditions with extensive lifespan
- ✓ Use of top class raw materials for better pressure resistance
- ✓ Proven leak-free secured system

SIZE	CODE	PRICE
20 x 20	17020VST0020	£37.74
25 x 25	17025VST0025	£53.53
32 x 32	17032VST0032	£82.91

STOP TAP FOR USE IN IRRIGATION AND AGRICULTURE

PN16 PP COMPRESSION BALL VALVE STOP TAP



Features

- ✓ Sizes: 20mm, 25mm, 32mm
- ✓ Material: PP
- ✓ Pressure: PN16

SIZE	CODE	PRICE
20mm	17020VLB0020	£5.58
25mm	17025VLB0025	£8.01
32mm	17032VLB0032	£12.78

UNIVERSAL FITTINGS

The Unifit product components are designed to seal the various diameters of material pipes and are especially designed for the water transportation industry.

The fittings are suitable for different pipe diameters and for tubes of different kind of materials (metal and plastics).

The Unifit provides means of connecting Polyethylene pipes to a variety of plumbing pipe materials, using push-fit technology for fast connection.

Pipes made of materials such as Copper, Polybutylene and PEX can be inserted through the push-fit side of the fitting ensuring optimum sealing and gripping of the system.

Polyethylene pipes are inserted from the other side of the fitting which is operated with our 250 series mechanical fastening mechanism.

Features

- ✓ The connector has a particularly flexible mechanism allowing connections to diameters in the 15-34mm range.
- ✓ Double sealing - hydraulic and mechanical.
- ✓ Working pressure: PN16.

UNIVERSAL FITTINGS



SIZE	CODE	PRICE
Unifit coupling PE 20mm to Universal 15-22mm	25015M5020	£28.02
Unifit coupling PE 25mm to Universal 15-22mm	25015M5025	£35.05
Unifit coupling PE 25mm to Universal 20-27mm	25021M5025	£37.54
Unifit coupling PE 32mm to Universal 20-27mm	25021M5032	£49.45
Unifit coupling PE 25mm to Universal 27-34mm	25027M5025	£49.45
Unifit coupling PE 32mm to Universal 27-34mm	25027M5032	£56.91
Double Universal fitting 15-22 x 15-22mm	25015M5015	£53.39
Double Universal fitting 20-27 x 20-27mm	25021M5021	£63.85
Double Universal fitting 27-34 x 27-34mm	25027M5027	£78.93

CONVERSION KITS

COPPER CONVERSION KIT

Copper conversion kit to connect PE pipe to copper.



SIZE	CODE	PRICE
020 x 015	CCK020015	£10.46
025 x 022	CCK025022	£13.88

UNIVERSAL CONVERSION KIT

Universal kit to connect PE pipe to other pipes made of different materials.



SIZE	CODE	PRICE
15 - 21	UCK015021	£21.34
21 - 28	UCK021028	£28.19
27 - 35	UCK027035	£33.51

ELECTROFUSION FITTINGS

Superior Fusion Integrity for Long-Lasting Pipeline Performance

Electrofusion fittings are manufactured using modern, automated production lines for plastic processing.

This guarantees a stable quality product, trouble free installation, regardless of medium is transported in the pipeline.

Mediums: Water, Gas, Hydrogen. Material: PE100, SDR: 7, 4 | 11 | 17

COUPLING



SIZE	CODE	PRICE
20mm	EFC0020	£14.31
25mm	EFC0025	£14.31
32mm	EFC0032	£14.31
40mm	EFC0040	£20.57
50mm	EFC0050	£25.97
63mm	EFC0063	£27.60
75mm	EFC0075	£43.36
90mm	EFC0090	£41.57
110mm	EFC0110	£55.36

ELECTROFUSION FITTINGS

END CAP



SIZE	CODE	PRICE
20mm	EFCE020	£23.57
25mm	EFCE025	£24.94
32mm	EFCE032	£27.34
40mm	EFCE040	£34.79
50mm	EFCE050	£47.90
63mm	EFCE063	£55.36
75mm	EFCE075	£93.50
90mm	EFCE090	£104.38
110mm	EFCE0110	£130.95

ELECTROFUSION FITTINGS

90 DEGREE ELBOW



SIZE	CODE	PRICE
20mm SDR 11	EFE02090	£33.68
25mm SDR 11	EFE02590	£35.31
32mm SDR 11	EFE03290	£38.48
40mm SDR 11	EFE04090	£46.36
50mm SDR 11	EFE05090	£59.48
63mm SDR 11	EFE06390	£66.59
75mm SDR 11	EFE07590	£95.81
90mm SDR 11	EFE09090	£101.04
110mm SDR 11	EFE011090	£133.95

ELECTROFUSION FITTINGS

45 DEGREE ELBOW



SIZE	CODE	PRICE
20mm SDR 11	EFE02045	£38.14
25mm SDR 11	EFE02545	£40.02
32mm SDR 11	EFE03245	£40.02
40mm SDR 11	EFE04045	£49.02
50mm SDR 11	EFE05045	£56.90
63mm SDR 11	EFE06345	£70.70
75mm SDR11	EFE07545	£95.81
90mm SDR 11	EFE09045	£101.04
110mm SDR 11	EFE011045	£139.95

ELECTROFUSION FITTINGS

EQUAL TEE



SIZE	CODE	PRICE
20 x 20 x 20	EFET0020	£38.14
25 x 25 x 25	EFET0025	£39.25
32 x 32 x 32	EFET0032	£42.68
40 x 40 x 40	EFET0040	£44.56
50 x 50 x 50	EFET0050	£64.70
63 x 63 x 63	EFET0063	£68.13
75 x 75 x 75	EFET0075	£96.93
90 x 90 x 75	EFET0090	£123.67
110 x 110 x 110	EFET0110	£154.86

ELECTROFUSION FITTINGS

REDUCING COUPLING



SIZE	CODE	PRICE
25 - 20mm	EFRC025020	£25.11
32 - 20mm	EFRC032020	£26.22
32 - 25mm	EFRC032025	£26.30
40 - 25mm	EFRC040025	£29.57
40 - 32mm	EFRC040032	£29.57
50 - 25mm	EFRC050025	£33.68
50 - 32mm	EFRC050032	£33.68
50 - 40mm	EFRC050040	£37.00
63 - 25mm	EFRC063025	£44.56
63 - 32mm	EFRC063032	£44.56
63 - 40mm	EFRC063040	£44.56
63 - 50mm	EFRC063050	£44.56
70 - 50mm	EFRC075050	£72.07
75 - 63mm	EFRC075063	£72.07
90 - 50mm	EFRC090050	£77.82
90 - 63mm	EFRC090063	£77.82
90 - 75mm	EFRC090075	£98.38
110 - 63mm	EFRC0110063	£115.95
110 - 75mm	EFRC0110075	£121.61
110 - 90mm	EFRC0110090	£125.38

ELECTROFUSION FITTINGS

OTHER ELECTROFUSION FITTINGS



DUCKFOOT ELBOW



UNIVERSAL
BRANCH SADDLE



BRANCH SADDLE



REPAIR CLAMP



TAPPING TEE

Contact us for more information: **01782 894 912**

SADDLES

Saddles are used for splits, junctions and for adding lines to a main line and are designed for use with all kinds of pipes.

The saddles arrive 'ready-to-install' as the bolts and seals are already assembled in the saddle. Simply fit the saddle and tighten the bolts.

TECHNICAL SPECIFICATIONS

All saddles comply with the dimensional requirements and characteristics of the relevant standard EN ISO 13460.

Threads (BSP) are manufactured according to EN 10226, ISO 7 and DIN 2999

SADDLES

SADDLE - 2 BOLTS NO METAL RING



SIZE	CODE	PRICE
25 x $\frac{3}{4}$	24025R0202	£4.11
32 x $\frac{1}{2}$	24032R0201	£4.29
32 x $\frac{3}{4}$	24032R0202	£4.29
40 x $\frac{1}{2}$	24040R0201	£4.29
40 x $\frac{3}{4}$	24040R0202	£4.88
40 x 1	24040R0203	£4.88
50 x $\frac{3}{4}$ ** 2/4 BOLT	14050R6202	£7.28
50 x 1	24050R0203	£6.51
63 x $\frac{1}{2}$	24063R0201	£8.31
63 x $\frac{3}{4}$ ** 2/4 BOLT	14063R6202	£10.11

SADDLES

SADDLE - 4 BOLTS WITH METAL RING



SIZE	CODE	PRICE
50 x 1	24050R4203	£8.48
63 x 1	24063R4203	£9.00
63 x 1¼	24063R4204	£14.83
63 x 1½	24063R4205	£14.83
75 x ¾	24075R4202	£11.06
75 x 1	24075R4203	£11.06
75 x 1½	24075R4205	£16.37
75 x 2	24075R4206	£16.37
90 x ¾	24090R4202	£14.23
90 x 1	24090R4203	£14.23
90 x 1½	24090R4205	£20.05
90 x 2	24090R4206	£20.05
110 x ¾	24110R4202	£21.00
110 x 1	24110R4203	£21.00
110 x 1½	24110R4205	£25.28

SADDLES

SADDLE - 6 BOLTS WITH METAL RING



SIZE	CODE	PRICE
125 x 3	24125R4208	£43.19
140 x 1	24140R6203	£43.19
140 x 2	24140R6206	£52.62
160 x 1½	24160R6205	£61.53
160 x 2	24160R6206	£61.53

SELF SEAL PVC BSP THREADED FITTINGS

A range of quality BSP threaded fittings made from Polypropylene and 16 bar rated. The Plas-fit self seal threaded fittings range has the unique self seal, pre-assembled O-rings that saves labour and Teflon and allows tightening without tools.

FEATURES

Extra strong design and excellent mechanical properties for long life, durability and resistance to breakage

Wide grip for easy assembly

Plas-fit UK threaded fittings are available with the unique self seal system (pre-assembled o-rings) that saves labour and allows tightening without tools

SPECIFICATION

Material: Polypropylene

O-Ring: EPDM

Working Pressure:

- 3/8" - 2" PN10
- 2½" - 4" PN6

Threads: BSP

Sizes available: 3/8" - 4"

O-Ring seal on male and female ends of fittings

SELF SEAL PVC BSP THREADED FITTINGS

NIPPLE



SIZE	CODE	PRICE
1/2" x 1/2"	N125	£0.51
3/4" x 3/4"	N345	£0.69
1" x 1"	N15	£1.54
1 1/4" x 1 1/4"	N1145	£3.09
1 1/2" x 1 1/2"	N1125	£3.69
2" x 2"	N25	£4.97

SELF SEAL PVC BSP THREADED FITTINGS

REDUCING NIPPLE



SIZE	CODE	PRICE
1/2" x 3/4"	N12345	£0.60
1" x 1/2"	N10125	£1.46
1" x 3/4"	N1345	£1.46
1" x 1 1/4"	N11145	£2.91
3/4" x 1 1/4"	N114345	£2.91
1 1/4" x 1 1/2"	N1141125	£3.43
1" x 1 1/2"	N11125	£3.43
1 1/2" x 1/2"	N112125	£3.43
2" x 1"	N215	£4.29
2" x 1 1/4"	N21145	£4.29
2" x 1 1/2"	N21125	£4.80

SELF SEAL PVC BSP THREADED FITTINGS

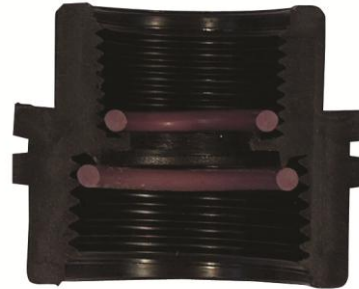
FEMALE COUPLING



SIZE	CODE	PRICE
1/2" x 1/2"	FC12S	£1.20
3/4" x 3/4"	FC34S	£1.63
1" x 1"	FC1S	£1.80
1 1/4" x 1 1/4"	FC114S	£3.17
1 1/2" x 1 1/2"	FC112S	£6.51
2" x 2"	FC2S	£9.34

SELF SEAL PVC BSP THREADED FITTINGS

REDUCING FEMALE COUPLING



SIZE	CODE	PRICE
1/2" x 3/4"	FC12345	£1.54
1" x 3/4"	FC1345	£1.71
1 1/4" x 1"	FC11145	£3.09
1" x 1 1/2"	FC11125	£6.08
3/4" x 1 1/2"	FC112345	£6.08
1 1/2" x 1 1/4"	FC1121145	£6.34
2" x 3/4"	FC2345	£8.40
2" x 1"	FC215	£8.48
2" x 1 1/4"	FC21145	£9.17
2" x 1 1/2"	FC21125	£9.00

SELF SEAL PVC BSP THREADED FITTINGS

PLUG



SIZE	CODE	PRICE
1/2"	PM12S	£0.51
3/4"	PM34S	£0.60
1"	PM1S	£1.54
1 1/4"	PM114S	£2.66
1 1/2"	PM112S	£2.91
2"	PM2S	£3.43

SELF SEAL PVC BSP THREADED FITTINGS

END CAP



SIZE	CODE	PRICE
1/2"	CF12S	£0.69
3/4"	CF34S	£0.86
1"	CF1S	£1.29
1 1/4"	CF114S	£1.80
1 1/2"	CF112S	£2.14
2"	CF2S	£4.71
3"	CF3S	£15.25

SELF SEAL PVC BSP THREADED FITTINGS

ELBOW MALE TO FEMALE THREAD



SIZE	CODE	PRICE
1/2" M x 1/2" F	EMF125	£2.40
3/4" M x 3/4" F	EMF345	£3.09
1" M x 1" F	EMF15	£3.69

TEE FEMALE THREAD



SIZE	CODE	PRICE
1/2" x 1/2" x 1/2"	TF125	£3.26
3/4" x 3/4" x 3/4"	TF345	£4.03
1" x 1" x 1"	TF15	£4.46
1 1/4" x 1 1/4" x 1 1/4"	TF1145	£8.66
1 1/2" x 1 1/2" x 1 1/2"	TF1125	£9.94
2" x 2" x 2"	TF25	£16.63

SELF SEAL PVC BSP THREADED FITTINGS

REDUCING BUSH FEMALE TO MALE



SIZE	CODE	PRICE
1/2" M x 3/4" F	BFM34125	£1.20
3/4" M x 3/4" F	BFM345	£2.23
1" M x 1" F	BFM15	£2.66
1/2" M x 1" F	BFM10125	£2.66
3/4" M x 1" F	BFM1345	£2.66
1" M x 1 1/4" F	BFM11415	£3.09
1/2" M x 1 1/4" F	BFM114125	£3.09
3/4" M x 1 1/4" F	BFM114345	£3.09
1 1/2" M x 1 1/2" F	BFM1125	£3.94
3/4" M x 1 1/2" F	BFM112345	£3.69
1" M x 1 1/2" F	BFM11215	£3.77
1 1/4" M x 1 1/2" F	BFM1121145	£3.86
3/4" M x 2" F	BFM2345	£5.40
1" M x 2" F	BFM215	£5.40
2" M x 2" F	BFM25	£5.40
1 1/2" M x 2" F	BFM21125	£5.40

SELF SEAL PVC BSP THREADED FITTINGS

REDUCING BUSH MALE TO FEMALE



SIZE	CODE	PRICE
3/4" M x 1/2" F	BMF34125	£0.86
1" M x 1/2" F	BMF10125	£1.20
1" M x 3/4" F	BMF1345	£1.20
1 1/4" M x 1/2" F	BMF114125	£2.49
1 1/4" M x 3/4" F	BMF114345	£2.49
1 1/4" M x 1" F	BMF11415	£2.49
1 1/2" M x 1/2" F	BMF112125	£2.57
1 1/2" M x 3/4" F	BMF112345	£2.57
1 1/2" M x 1" F	BMF11215	£2.57
1 1/2" M x 1 1/4" F	BMF1121145	£2.57
2" M x 1/2" F	BMF2125	£3.43
2" M x 3/4" F	BMF2345	£3.43
2" M x 1" F	BMF215	£3.43
2" M x 1 1/4" F	BMF21145	£3.43
2" M x 1 1/2" F	BMF21125	£3.43

SELF SEAL PVC BSP THREADED FITTINGS

ELBOW - FEMALE THREAD



SIZE	CODE	PRICE
1/2" x 1/2"	EF12S	£3.00
3/4" x 3/4"	EF34S	£3.51
1" x 1"	EF1S	£3.94
1 1/4" x 1 1/4"	EF114S	£7.71
1 1/2" x 1 1/2"	EF112S	£9.17
2" x 2"	EF2S	£14.74

PLUG O-RING



SIZE	CODE	PRICE
3/4"	PM34OR5	£1.63
1 1/2"	PM112OR5	£5.23
2"	PM2OR5	£6.26

SELF SEAL PVC BSP THREADED FITTINGS

TEE - MALE THREAD



SIZE	CODE	PRICE
3/4" x 3/4" x 3/4"	NLT34M5	£2.14
3/4" x 1/2" x 3/4"	NLT3412M5	£2.14
1" x 1" x 1"	NLT1M5	£3.09
1" x 3/4" x 1"	NLT134M5	£3.09
3/4" x 1" x 3/4"	NLT341M5	£3.09
1" x 1/2" x 1"	NLT1012M5	£3.09

TEE - FEMALE SWIVEL



SIZE	CODE	PRICE
3/4"M x 3/4"F x 3/4"M	NLT3455	£3.60
1"M x 1"F x 1"M	NLT155	£5.14

SELF SEAL PVC BSP THREADED FITTINGS

ELBOW - FEMALE SWIVEL



SIZE	CODE	PRICE
3/4" M to F	NLE345	£3.34
1" M to F	NLE15	£4.29
1" F x 3/4" M	NLE1345	£4.29

ELBOW - MALE THREAD



SIZE	CODE	PRICE
3/4"	NLE34MS	£1.89
3/4" x 1/2"	NLE3412MS	£2.06
1"	NLE1MS	£2.74
1" x 3/4"	NLE134MS	£2.74
1" x 1/2"	NLE1012MS	£2.74

COMPRESSION FITTINGS - PN10 250 SERIES

The Plas-Fit UK PN10 250 Series is a premium range of compression fittings engineered for polyethylene (PE) pipe systems operating at pressures up to 10 bar.

Sizes typically range from 16mm to 63mm, with key configurations including couplers, elbows, tees, reducers, and threaded adapters.

90 DEGREE BEND



SIZE	CODE	PRICE
16 x 16	25016Z1016	£3.63
20 x 20	25020Z1020	£3.58
25 x 25	25025Z1025	£4.35
32 x 32	25032Z1032	£5.50
40 x 40	25040Z1040	£10.23
50 x 50	25050Z1050	£13.64
63 x 63	25063Z1063	£18.41

COMPRESSION FITTINGS - PN10 250 SERIES

MALE THREADED ELBOW



SIZE	CODE	PRICE
16 x 1/2"	25016Z1101	£3.13
16 x 3/4"	25016Z1102	£3.15
20 x 1/2"	25020Z1101	£2.64
20 x 3/4"	25020Z1102	£2.66
25 x 1/2"	25025Z1101	£3.24
25 x 3/4"	25025Z1102	£3.26
25 x 1"	25025Z1103	£3.28
32 x 3/4"	25032Z1102	£3.90
32 x 1"	25032Z1103	£3.94
40 x 1 1/2"	25040Z1105	£6.71
50 x 2"	25050Z1106	£9.46
63 x 2"	25063Z1106	£12.76

COMPRESSION FITTINGS - PN10 250 SERIES

FEMALE THREADED ELBOW



SIZE	CODE	PRICE
20 x 1/2"	25020Z1201	£2.81
20 x 3/4"	25020Z1202	£2.83
25 x 3/4"	25025Z1202	£3.69
25 x 1"	25025Z1203	£3.69
32 x 3/4"	25032Z1202	£4.29
32 x 1"	25032Z1203	£4.31
40 x 1 1/2"	25040Z1205	£9.24
50 x 1 1/2"	25050Z1205	£12.65
50 x 2"	25050Z1206	£12.68
63 x 2"	25063Z1206	£15.60

COMPRESSION FITTINGS - PN10 250 SERIES

COUPLING



SIZE	CODE	PRICE
16 x 16	25016M1016	£3.52
20 x 20	25020M1020	£3.41
25 x 25	25025M1025	£4.13
32 x 32	25032M1032	£5.28
40 x 40	25040M1040	£9.41
50 x 50	25050M1050	£12.43
63 x 63	25063M1063	£17.81

COMPRESSION FITTINGS - PN10 250 SERIES

REDUCING COUPLING



SIZE	CODE	PRICE
25 - 20	25025D1020	£4.29
32 - 20	25032D1020	£5.39
32 - 25	25032D1025	£5.40
40 - 32	25040D1032	£9.90
50 - 40	25050D1040	£13.19
50 - 32	25050D1032	£14.74
63 - 50	25063D1050	£18.16

COMPRESSION FITTINGS - PN10 250 SERIES

MALE ADAPTOR



SIZE	CODE	PRICE
16 x 1/2"	25016M1101	£2.39
16 x 3/4"	25016M1102	£2.40
20 x 1/2"	25020M1101	£1.97
20 x 3/4"	25020M1102	£2.05
25 x 1/2"	25025M1101	£2.23
25 x 3/4"	25025M1102	£2.23
25 x 1"	25025M1103	£2.23
32 x 3/4"	25032M1102	£2.99
32 x 1"	25032M1103	£2.99
40 x 1"	25040M1103	£5.91
40 x 1 1/2"	25040M1105	£5.91
50 x 1 1/2"	25050M1105	£7.45
50 x 2"	25050M1106	£7.46
63 x 2"	25063M1106	£10.19

COMPRESSION FITTINGS - PN10 250 SERIES

FEMALE ADAPTOR



SIZE	CODE	PRICE
16 x 1/2"	25016M1201	£2.57
16 x 3/4"	25016M1202	£2.57
20 x 1/2"	25020M1201	£2.23
20 x 3/4"	25020M1202	£2.23
25 x 3/4"	25025M1202	£2.66
25 x 1"	25025M1203	£2.66
32 x 3/4"	25032M1202	£3.34
32 x 1"	25032M1203	£3.34
40 x 1"	25040M1203	£6.51
40 x 1 1/2"	25040M1205	£6.51
50 x 1 1/2"	25050M1205	£8.66
50 x 2"	25050M1206	£8.66
63 x 2"	25063M1206	£12.34

COMPRESSION FITTINGS - PN10 250 SERIES

EQUAL TEE



SIZE	CODE	PRICE
16 x 16 x 16	25016T1016	£5.14
20 x 20 x 20	25020T1020	£4.54
25 x 25 x 25	25025T1025	£6.08
32 x 32 x 32	25032T1032	£7.71
40 x 40 x 40	25040T1040	£14.40
50 x 50 x 50	25050T1050	£19.20
63 x 63 x 63	25063T1063	£28.02

COMPRESSION FITTINGS - PN10 250 SERIES

MALE TEE



SIZE	CODE	PRICE
20 x $\frac{3}{4}$ x 20	25020T1102	£4.02
25 x $\frac{1}{2}$ x 25	25025T1101	£5.05
25 x $\frac{3}{4}$ x 25	25025T1102	£5.05
32 x $\frac{3}{4}$ x 32	25032T1102	£6.77
32 x 1 x 32	25032T1103	£6.77
40 x 1 x 40	25040T1103	£11.57
40 x $1\frac{1}{2}$ x 40	25040T1105	£11.57
50 x $1\frac{1}{2}$ x 50	25050T1105	£16.19
50 x 2 x 50	25050T1106	£16.19
63 x 2 x 63	25063T1106	£25.79

COMPRESSION FITTINGS - PN10 250 SERIES

FEMALE TEE



SIZE	CODE	PRICE
16 x 1/2 x 16	25016T1201	£4.54
16 x 3/4 x 16	25016T1202	£4.54
20 x 1/2 x 20	25020T1201	£4.19
20 x 3/4 x 20	25020T1202	£4.19
25 x 1/2 x 25	25025T1201	£5.06
25 x 3/4 x 25	25025T1202	£5.06
25 x 1 x 25	25025T1203	£4.90
32 x 3/4 x 32	25032T1202	£6.98
32 x 1 x 32	25032T1203	£6.99
40 x 1 1/2 x 40	25040T1205	£14.01
50 x 1 1/2 x 50	25050T1205	£17.81
50 x 2 x 50	25050T1206	£17.81
63 x 2 x 63	25063T1206	£26.55

COMPRESSION FITTINGS - PN10 250 SERIES

REDUCING TEE



SIZE	CODE	PRICE
20 x 16 x 20	25020T1016	£5.83
25 x 20 x 25	25025T1020	£6.26
32 x 25 x 32	25032T1025	£7.97
40 x 32 x 40	25040T1032	£14.83
50 x 40 x 50	25050T1040	£19.20
63 x 50 x 63	25063T1050	£28.02

COMPRESSION FITTINGS - PN10 250 SERIES

END PLUG



SIZE	CODE	PRICE
25mm	25025S1120	£2.74
32mm	25032S1120	£3.43
40mm	25040S1120	£6.08
50mm	25050S1120	£8.57
63mm	25063S1120	£11.91

COMPRESSION FITTINGS - PN10 250 SERIES

WALL ELBOW CONNECTOR



SIZE	CODE	PRICE
20 x 1/2"	25020W0201	£14.99
25 x 3/4"	25025W0202	£17.85

POP UP ELBOW CONNECTOR



SIZE	CODE	PRICE
25 x 25 x 1/2"	25025Z8201	£7.97

SLIP TEES

Slip tees are designed for quick and efficient installation in water distribution systems. Unlike traditional tees, slip tees allow pipes to be slid into place without the need for threading or soldering, making them ideal for tight spaces and rapid repairs.

They provide a secure, leak-resistant connection and are perfect for branching off an existing line without fully dismantling the system.

KEY BENEFITS

- **Fast Installation** - no specialist tools required.
- **Versatile** - ideal for repairs and new installations.
- **Reliable Seal** - designed to prevent leaks under pressure.

FEMALE THREAD TEE



SIZE	CODE	PRICE
50 x 1 1/2 x 50	15050KT0205	£71.22
50 x 2 x 50	15050KT0206	£71.22
63 x 1 1/2 x 63	15063KT0205	£100.53
63 x 2 x 63	15063KT0206	£100.53

SLIP TEES

EQUAL TEE

The equal slip tee provides a fast and secure way to create a branch connection with all three outlets the same size. Its slip-on design allows quick installation without cutting or threading the pipe, making it ideal for repairs and new pipeline layouts.

KEY BENEFITS

- Equal-sized outlets for uniform pipe connections.
- Fast, tool-free installation with slip-on compression fittings.
- Reliable sealing to prevent leaks under pressure.



SIZE	CODE	PRICE
50 x 50 x 50	15050KT0050	£88.53
63 x 63 x 63	15063KT0063	£124.52

SWIVEL FITTINGS

Swivel Fittings from Plas-Fit UK offer flexible, high-performance solutions for a wide range of water connection applications.

Designed for quick installation and reliable operation, our swivel fittings make it easy to connect pipes at various angles without the need for excessive force or complex tools.

Whether you're working in tight spaces or need a secure yet adjustable connection, these fittings provide a dependable answer that saves time and ensures long-term integrity.

Manufactured to international standards and additional certifications, and built from robust, high-quality materials, our swivel fittings are ideal for both residential and commercial plumbing systems.

With a variety of sizes and configurations available, Plas-Fit UK ensures that you'll find the right fitting for your needs, delivering convenience, durability, and peace of mind with every connection.

SWIVEL FITTINGS

SWIVEL TEE MALE/FEMALE



SIZE	CODE	PRICE
1"F x 1"F x 1"M	STMF1	£7.54
1½"F x 1½"F x 1½"M	STMF112	£18.17

SWIVEL TEE



SIZE	CODE	PRICE
1"F x 1"F x 1"F	STF1	£9.00
1½"F x 1½"F x 1½"F	STF112	£22.54

SWIVEL FITTINGS

SWIVEL CROSS



SIZE	CODE	PRICE
1"F x 1"F x 1"F x 1"F	SCF1	£11.83

SWIVEL CROSS MALE ADAPTOR



SIZE	CODE	PRICE
1"F x 1"F x 1"F x 1"M	SCFM1	£9.94
1"F x 1"F x 1"F x 3/4"M	SCFM134	£9.94

SWIVEL FITTINGS

SWIVEL ELBOW MALE FEMALE



SIZE	CODE	PRICE
1"F x 1"M	SEFM1	£4.80
1"F x ¾"M	SEFM134	£4.54
1½"F x 1½"M	SEFM112	£13.80

SWIVEL ELBOW FEMALE/FEMALE



SIZE	CODE	PRICE
1"F x 1"F	SEF1	£6.51
1½"F x 1½"F	SEF112	£18.17

SWIVEL FITTINGS

SWIVEL COUPLING



SIZE	CODE	PRICE
1"F x 1"F	SFF1	£5.91

SWIVEL ADAPTOR MALE/FEMALE



SIZE	CODE	PRICE
1"F x 1"M	SFM1	£3.94
1"F x 3/4"M	SFM134	£3.94
1 1/2"F x 1 1/2"M	SFM112	£9.77

SWIVEL FITTINGS

SWIVEL MANIFOLD FEMALE



SIZE	CODE	PRICE
3 x 1"F x 1"M	STMF12	£15.85
4 x 1"F x 1"M	STMF13	£23.83
5 x 1"F x 1"M	STMF14	£31.71

SWIVEL MANIFOLD MALE



SIZE	CODE	PRICE
1"F x 2 x 1"M	STMMF1	£5.48
1"F x 3 x 1"M	STMMF12	£12.86
1"F x 4 x 1"M	STMMF13	£20.48
1"F x 5 x 1"M	STMMF14	£25.71

NUT LOCK FITTINGS

For use in agriculture and irrigation systems.

KEY BENEFITS

- **Quick Installation** - tighten by hand or with a standard wrench.
- **Strong and Leak-resistant.**
- Precision-engineered for long-term performance.
- **Versatile** - suitable for all agriculture and irrigation systems.
- **Reusable** - easy to disassemble and refit when needed.
- Whether you're building a new system or upgrading an existing one, nut lock fittings offer a simple solution for secure, long-lasting pipe connections.

TECHNICAL SPECIFICATIONS

- Materials: Body and nut - PP, Grip - PBT
- Threads: BSPT
- Maximum working pressure: 10kg/cm²
- Fertiliser resistant
- Wall thickness:
 - 16-17mm: 0.7 - 1.5mm
 - 20mm: 0.9 - 2.0mm
 - 25mm: 1.4 - 2.0mm

All nut lock fittings are available in ½" (16-18mm) pipe diameter.

NUT LOCK FITTINGS

LINE END



SIZE	CODE	PRICE
16mm	NLP16	£1.97
20mm	NLP20	£1.97
25mm	NLP25	£3.60

COUPLING



SIZE	CODE	PRICE
16 x 16mm	NL16	£3.43
16 x 25mm	NL1625	£4.97
20 x 16mm	NL2016	£3.43
20 x 20mm	NL20	£3.43
20 x 25mm	NL2025	£4.97
25 x 25mm	NL25	£5.91

NUT LOCK FITTINGS

MALE THREAD



SIZE	CODE	PRICE
16 x ½"	NL1612M	£1.97
16 x ¾"	NL1634M	£1.97
20 x ½"	NL2012M	£2.06
20 x ¾"	NL2034M	£2.06
25 x ¾"	NL2534M	£3.69
25 x 1"	NL251M	£3.69

FEMALE THREAD



SIZE	CODE	PRICE
16 x ¾"	NL1634F	£3.60
20 x ¾"	NL2034F	£3.60
25 x 1	NL251F	£4.88
16 x ¾" SWIVEL	NL1634S	£4.03
20 x ¾" SWIVEL	NL2034S	£4.03

NUT LOCK FITTINGS

TEES



EQUAL

SIZE	CODE	PRICE
16 X 16 X 16mm	NLT16	£6.26
20 X 20 X 20mm	NLT20	£6.26
25 X 25 X 25mm	NLT25	£9.68

REDUCING

SIZE	CODE	PRICE
16 x 20 x 16mm	NLTR1620	£6.26
16 x 25 x 16mm	NLTR1625	£8.06
20 x 16 x 20mm	NLTR2016	£6.26
20 x 25 x 20mm	NLTR2025	£8.06
25 x 16 x 25mm	NLTR2516	£8.91
25 x 20 x 25mm	NLTR2520	£8.91

NUT LOCK FITTINGS

ELBOW



SIZE	CODE	PRICE
16mm	NLE16	£4.63
20mm	NLE20	£4.63
25mm	NLE25	£7.11
20mm x 16mm	NLE2016	£4.63
25mm x 16mm	NLE2516	£6.34
25mm x 20mm	NLE2520	£6.34

SWIVEL ELBOW FEMALE THREAD



SIZE	CODE	PRICE
16mm x 3/4"	NLE16345	£4.54
20mm x 3/4"	NLE20345	£4.54
25mm x 1" F	NLE2515	£6.09

NUT LOCK FITTINGS

ELBOW MALE THREAD



SIZE	CODE	PRICE
16mm x 1/2" M	NLE1612M	£3.34
16mm x 3/4" M	NLE1634M	£3.34
16mm x 1" M	NLE161M	£3.77
20mm x 1/2" M	NLE2012M	£3.34
20mm x 3/4" M	NLE2034M	£3.34
20mm x 1" M	NLE201M	£3.77
25mm x 1/2" M	NLE2512M	£5.06
25mm x 3/4" M	NLE2534M	£5.06
25mm x 1" M	NLE251M	£5.06

GRIP



SIZE	CODE	PRICE
16mm	NLG16	£0.52
20mm	NLG20	£0.52
25mm	NLG25	£0.86

NUT LOCK FITTINGS

MALE THREAD TEE



SIZE	CODE	PRICE
16mm x 1/2" M	NLT1612M	£4.72
16mm x 3/4" M	NLT1634M	£4.72
16mm x 1" M	NLT161M	£5.23
20mm x 1/2" M	NLT2012M	£4.98
20mm x 3/4" M	NLT2034M	£7.63
20mm x 1" M	NLT201M	£5.23
25mm x 1/2" M	NLT2512M	£4.98
25mm x 3/4" M	NLT2534M	£7.63
25mm x 1" M	NLT251M	£7.37

FEMALE SWIVEL TEE



SIZE	CODE	PRICE
16 x 3/4F x 16 SWIVEL	NLT1634S	£6.08
20 x 3/4F x 20 SWIVEL	NLT2034S	£6.08
25 x 1F x 25 SWIVEL	NLT251S	£8.91

BARB CONNECTORS

Reliable, Simple, and Secure Push-On Hose Connections

Plas-Fit UK Barb Connectors provide a quick and dependable solution for connecting flexible pipes and hoses across a wide range of water distribution and irrigation systems.

Manufactured to international standards and additional certifications, our barb fittings ensure a secure, leak-resistant grip without the need for complex tools or adhesives.

Engineered for durability and ease of use, our barb connectors are ideal for both domestic and commercial applications, including agricultural, landscaping, and low-pressure plumbing systems.

With a strong push-fit design and a wide range of sizes and configurations available, Plas-Fit barb fittings are trusted by professionals for their reliability, performance, and compliance.

All components are rigorously tested to meet UK standards, ensuring long-lasting service in tough environments.

BARB CONNECTORS

BARB CONNECTOR



SIZE	CODE	PRICE
16 x 16mm	C16	£0.60
20 x 20mm	C20	£0.77
25 x 25mm	C25	£0.90

BARB REDUCING CONNECTOR



SIZE	CODE	PRICE
20 - 16mm	C2016	£0.77
25 - 20mm	C2520	£0.90

BARB CONNECTORS

BARB ELBOW



SIZE	CODE	PRICE
16 x 16mm	E16	£0.69
20 x 20mm	E20	£1.20
25 x 25mm	E25	£7.11

BARB TEE



SIZE	CODE	PRICE
16 x 16 x 16mm	TC16	£0.94
20 x 20 x 20mm	TC20	£1.37

BARB CONNECTORS

BARB REDUCING TEE



SIZE	CODE	PRICE
20 x 16 x 20mm	TC2016	£1.37

BARB TEE MALE THREAD



SIZE	CODE	PRICE
16 x 1/2"	TM1612	£1.46
16 x 3/4"	TM1634	£1.46
20 x 1/2"	TM2012	£1.63
20 x 3/4"	TM2034	£1.63

BARB CONNECTORS

BARB ELBOW MALE THREAD



SIZE	CODE	PRICE
16 x 1/2"	ME1612	£0.94
16 x 3/4"	ME1634	£0.94
20 x 1/2"	ME2012	£1.29
20 x 3/4"	ME2034	£1.29

BARB ADAPTOR FEMALE



SIZE	CODE	PRICE
16 x 3/4"	FA1634	£1.54
20 x 3/4"	FA2034	£1.54

BARB CONNECTORS

BARB ADAPTOR MALE



SIZE	CODE	PRICE
16 x 1/2"	MA1612	£0.86
16 x 3/4"	MA1634	£0.86
20 x 1/2"	MA2012	£0.86
20 x 3/4"	MA2034	£0.86

BARB FEMALE TEE CONNECTOR



SIZE	CODE	PRICE
16mm x 2 x 3/4"	TF1634	£2.88
20mm x 2 x 3/4"	TF2034	£2.88
20 x 2 x 1"	TF201	£2.88

BARB CONNECTORS

BARB FORK CONNECTOR



SIZE	CODE	PRICE
16 x 3/4"	TRC16	£1.26
20 x 3/4"	TRC20	£1.26

BARB END PLUG



SIZE	CODE	PRICE
16mm	ELP16	£0.36
20mm	ELP20	£0.36

OTHER BARB FITTINGS AVAILABLE ON REQUEST: 01782 894 912

DRIPLINE VALVES

Plas-fit UK offer a wide range of high quality Dripline valves for various drip lines and drip tape that can be connected to P.V.C. and P.E pipes, and to threaded connections.

MATERIALS

- Body: P.P. or Acetal.
- Nut: P.P.
- Handle: P.P.
- O-Rings: EPDM.

TECHNICAL SPECIFICATIONS

- Maximum working pressure: 8 bar (116 psi).
- Threads: B.S.P.T. or NPT.
- Available Sizes: 16-20mm.
- Connections:
 - Barb, Thread (B.S.P.T. compatible with NPT threads).
 - Nut - lock connectors.
- Nut Drip - Tape Valves:
 - Wall thickness: 4 to 45 mil.
 - Tape with or without seam.
- Drip Tape - Ring Connectors:
 - Wall thickness 6 to 25 mil - Black ring.
 - Wall thickness 35 to 45 mil - Brown ring.
 - Tape without seam.

DRIPLINE VALVES

BARB COUPLING



SIZE	CODE	PRICE
16mm x 16mm	V16	£7.20
20mm x 16mm	V2016	£7.20
20mm x 20mm	V20	£7.20

MALE - MALE THREAD



SIZE	CODE	PRICE
1/2" M x 1/2" M	VMM12	£7.20
3/4" M x 3/4" M	VMM34	£7.20
3/4" M x 1/2" M	VMM3412	£7.20

DRIPLINE VALVES

MALE - FEMALE THREAD



SIZE	CODE	PRICE
1/2" M x 3/4" F	VMF1234	£7.20
3/4" M x 3/4" F	VMF34	£7.20

BARB MALE ADAPTOR



SIZE	CODE	PRICE
16mm x 1/2" M	VM1612	£7.20
16mm x 3/4" M	VM1634	£7.20
20mm x 1/2" M	VM2012	£7.20
20mm x 3/4" M	VM2034	£7.20

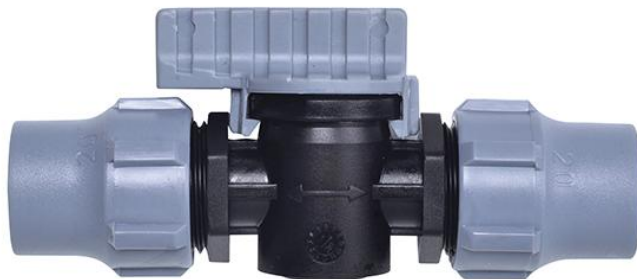
DRIPLINE VALVES

BARB FEMALE ADAPTOR



SIZE	CODE	PRICE
16mm x 3/4" F	VF1634	£7.38
20mm x 3/4" F	VF2034	£7.38

NUTLOCK



SIZE	CODE	PRICE
16mm x 16mm	V16NL	£7.65
20mm x 20mm	V20NL	£7.65
20mm x 16mm	V2016NL	£7.65

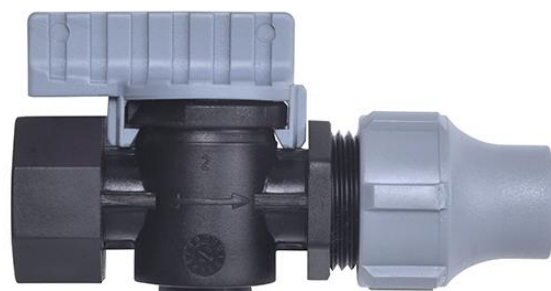
DRIPLINE VALVES

NUTLOCK MALE



SIZE	CODE	PRICE
16mm x 1/2" M	V12M16NL	£7.65
16mm x 3/4" M	V34M16NL	£7.65
20mm x 1/2" M	V12M20NL	£7.65
20mm x 3/4" M	V34M20NL	£7.65

NUTLOCK FEMALE



SIZE	CODE	PRICE
16mm X 3/4" F	V34F16NL	£7.65
20mm X 3/4" F	V34F20NL	£7.65

FILTERS



EITAN MANUAL PLASTIC FILTERS

Eitan plastic filters combine high quality with economical cost. The filters are available from 3/4" - 1½" with flow rates up to 20m³/h. Application: Water filtration for the agriculture, turf, and irrigation industries.

TECHNICAL SPECIFICATIONS

- Maximum working pressure: 10 Bar
- Threads: B.S.P.T.
- Available sizes: 3/4" - 1½"
- Flow rates: 5 - 20m³/h
- Filtration elements: Disc, Polyester or Stainless steel screen

FILTERS

ADIR PLASTIC FILTERS

The Adir range offers Manual and Semi Automatic operation and sizes range from 1½" - 3". Both have Disk or Screen filter elements, are high-quality and robust with a large filtration area. They have flow rates of up to 50m³/h. Application: Water filtration for the agriculture, irrigation, and turf industries.

FEATURES

- Special locking ring enables easy opening of the filters without the use of tools.
- Filter disc element is secured to the body and includes a telescopic spine that extends which allows you to easily clean the disc element.
- Large filtration area for handling large quantities of dirt.
- 2"S; 3": Screen 950cm²; Disc 1025cm²
- 1½"; 1"S: Screen 425cm²; Disc 500cm²

TECHNICAL SPECIFICATIONS

- Maximum working pressure:
 - 10 bar (140psi) black body and cup
 - 6 bar (95psi) grey body and cup
- Models 2"S, 3" are available Tee and In-line configurations
- Connections: Threads: B.S.P.T. or N.P.T. all sizes Flange, VIC: 2", 3"

FILTRATION ELEMENTS

- Stainless steel weave wire screen or grooved plastic discs
- Filtration range: 20 - 400 micron; (700 - 40 mesh)

FILTERS

ADIR SEMI AUTOMATIC PLASTIC FILTERS

Cost effective with efficient depth filtration without the need of disassembling the filter. The unique design eliminates the need for manual disc cleaning and complex, costly, automatic control systems.

FEATURES

- Flushing is performed simply by turning the operation handle a 1/4 of a turn.
- Water for flushing the discs is filtered with an internal screen.
- Small footprint.
- No external valves are required.

TECHNICAL SPECIFICATIONS

- Available sizes: 2" and 3"
- Maximum working pressure: 10 bar
- Maximum flow rate: 2" - 25m³/h, 3" - 40m³/h
- Available in 20 - 425micron (700 - 40mesh)
- Required time for flushing: 10 - 20 seconds
- Required time to flush the secondary port - 10 seconds
- Minimum flushing pressure: 2 bar
- Flushing flow rate: 2 bar - 9m³/h, 3 bar - 12m³/h
- Connections: Thread BSP, NPT, Flange, Vic

FILTERS

EITAN FILTERS

EITAN PLASTIC FILTER - POLYESTER SCREEN

SIZE	CODE	PRICE
3/4" SCREEN FILTER MALE - MALE THREAD	F34P	£21.43
1" SCREEN FILTER MALE - MALE THREAD	F1P	£21.43

EITAN PLASTIC FILTER - STAINLESS STEEL SCREEN

SIZE	CODE	PRICE
3/4" SCREEN FILTER MALE - MALE THREAD	F34S	£40.79
1" SCREEN FILTER MALE - MALE THREAD	F1S	£40.79
1 1/2" SCREEN FILTER MALE - MALE THREAD	F112S	£103.53

FILTERS

EITAN FILTERS

EITAN PLASTIC SWIVEL FILTER - POLYESTER SCREEN

SIZE	CODE	PRICE
3/4" SCREEN FILTER FEMALE - FEMALE THREAD	SF34P	£23.74
1" SCREEN FILTER FEMALE - FEMALE THREAD	SF1P	£23.74

EITAN PLASTIC SWIVEL FILTER STAINLESS STEEL SCREEN

SIZE	CODE	PRICE
3/4" SCREEN FILTER FEMALE - FEMALE THREAD	SF34S	£42.76
1" SCREEN FILTER FEMALE - FEMALE THREAD	SF1S	£42.76
1 1/2" SWIVEL SCREEN FILTER FEMALE - FEMALE THREAD	SF112S	£113.64

FILTERS

EITAN FILTERS

EITAN PLASTIC DISK FILTERS MALE - MALE THREAD

SIZE	CODE	PRICE
3/4" DISK FILTER MALE - MALE THREAD	F34D	£45.25
1" DISK FILTER MALE - MALE THREAD	F1D	£45.25
1 1/2" DISK FILTER MALE - MALE THREAD	F112D	£146.20

EITAN STAINLESS STEEL SCREEN CYLINDER FOR 3/4" OR 1"

SIZE	CODE	PRICE
80 MESH	FSP80SL	£28.11
120 MESH	FSP120SL	£28.11
155 MESH	FSP155SL	£28.11
200 MESH	FSP200SL	£28.11
80 MESH	FSP80SL	£28.11

FILTERS

EITAN FILTERS

EITAN PLASTIC SWIVEL DISK FILTERS FEMALE - FEMALE

SIZE	CODE	PRICE
3/4" DISK FILTER FEMALE - FEMALE THREAD	SF34D	£47.82
1" DISK FILTER FEMALE - FEMALE THREAD	SF1D	£47.82
1 1/2" DISK FILTER FEMALE - FEMALE THREAD	SF112D	£156.40

EITAN POLYESTER SCREEN CYLINDER FOR 3/4" OR 1"

SIZE	CODE	PRICE
40 MESH	FSP40L	£8.74
80 MESH	FSP80L	£8.74
120 MESH	FSP120L	£8.74
155 MESH	FSP155L	£8.74
200 MESH	FSP200L	£8.74

FILTERS

EITAN FILTERS

EITAN DISK ELEMENT FOR 3/4" OR 1"

SIZE	CODE	PRICE
80 MESH	FDE80	£32.57
120 MESH	FDE120	£32.57
140 MESH	FDE140	£32.57

STAINLESS STEEL SCREEN CYLINDER FOR 1 1/2" FILTER

SIZE	CODE	PRICE
80 MESH	FSI80S	£43.71
120 MESH	FSI120S	£43.71
155 MESH	FSI155S	£43.71
200 MESH	FSI200S	£43.71

FILTERS

EITAN FILTERS

DISK ELEMENT FOR 1 1/2" FILTER

SIZE	CODE	PRICE
40 MESH	EFD40S	£86.39
80 MESH	EFD80S	£86.39
120 MESH	EFD120S	£86.39
140 MESH	EFD140S	£86.39

FILTERS

ADIR FILTERS

**REPLACEMENT DISK AND SCREENS AVAILABLE ON REQUEST
FOR ALL ADIR MANUAL AND SEMI AUTOMATIC FILTERS**

ADIR MANUAL PLASTIC FILTERS

SCREEN FILTER MALE - MALE THREAD

SIZE	CODE	PRICE
1½" SCREEN FILTER	NF112MS - - - (Enter mesh size)	£202.59
2" SCREEN FILTER	NF2MS - - - (Enter mesh size)	£459.27
3" SCREEN FILTER	NF3MS - - - (Enter mesh size)	£674.81

DISK FILTER MALE - MALE THREAD

SIZE	CODE	PRICE
1½" DISK FILTER	NF112MD - - - (Enter mesh size)	£267.47
2" DISK FILTER	NF2MD - - - (Enter mesh size)	£513.26
3" DISK FILTER	NF3MD - - - (Enter mesh size)	£694.26

FILTERS

ADIR FILTERS

ADIR SEMI AUTOMATIC PLASTIC FILTERS

SEMI AUTO DISK FILTER MALE - MALE THREAD 120 MESH

SIZE	CODE	PRICE
2" SEMI AUTO DISK FILTER MALE - MALE THREAD 120 MESH	SAF2MD120	£1,953.96
3" SEMI AUTO DISK FILTER MALE - MALE THREAD 120 MESH	SAF3MD120	£2,605.28

SEMI AUTO SCREEN FILTER MALE - MALE THREAD 120 MESH

SIZE	CODE	PRICE
2" SEMI AUTO SCREEN FILTER MALE - MALE THREAD 120 MESH	SAF2MS120	£1,367.77
3" SEMI AUTO SCREEN FILTER MALE - MALE THREAD 120 MESH	SAF3MS120	£1,758.56

OTHER FILTER SIZES AVAILABLE ON REQUEST: 01782 894 912

EZ OPEN VALVE BOXES

Our range of EZ Open Valve Boxes has been engineered to provide reliable protection for underground valve installations while maintaining quick and convenient access for routine maintenance, system adjustments, and emergency shut-offs.

Manufactured from robust, high-grade materials designed to withstand environmental stress, mechanical impact, and long-term ground contact, these valve boxes offer both structural integrity and operational efficiency.

Their adaptable design allows integration with a wide variety of water management and irrigation systems, ensuring compliance with industry standards where required.

Whether your project demands certified enclosures to meet regulatory frameworks or straightforward, open-access solutions to streamline field operations, our EZ Open Valve Boxes deliver dependable performance and enduring value across multiple applications.

EZ OPEN VALVE BOXES

EZ OPEN OVAL VALVE BOX WITH TAP 31cm x 23cm

TECHNICAL FEATURES

Valve box type: Oval with tap

3/4" ball valve

Production material:

- Green polyethylene lid (PEHD)
- Black polypropylene (PP) lower body

Height: 11.6 cm

Lid longer side: 22 cm

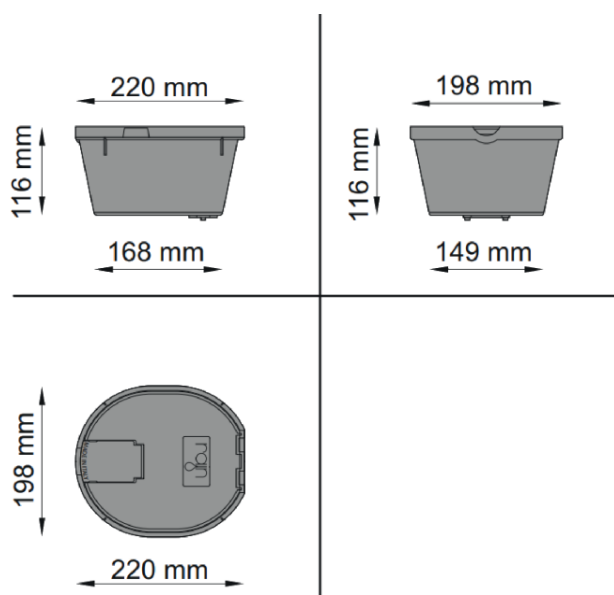
Lid shorter side: 19.8 cm

Longer side base: 16.8 cm

Shorter side base: 14.9 cm

Threaded inlet: 3/4" F metal

Threaded outlet: 3/4" M metal



SIZE	CODE	PRICE
22cm x 20cm	EZOVB022	£88.02

EZ OPEN VALVE BOXES

EZ OPEN ROUND VALVE BOX - 15cm

EZ Open round valve boxes deliver fast, easy access to underground valves while maintaining robust protection. Ideal for irrigation and water management systems, they combine strength with convenience making maintenance and adjustments simple and efficient.

TECHNICAL FEATURES

Valve box type: Circular

Max number of 1" solenoid valves: 1

Opening handle

Closing screw

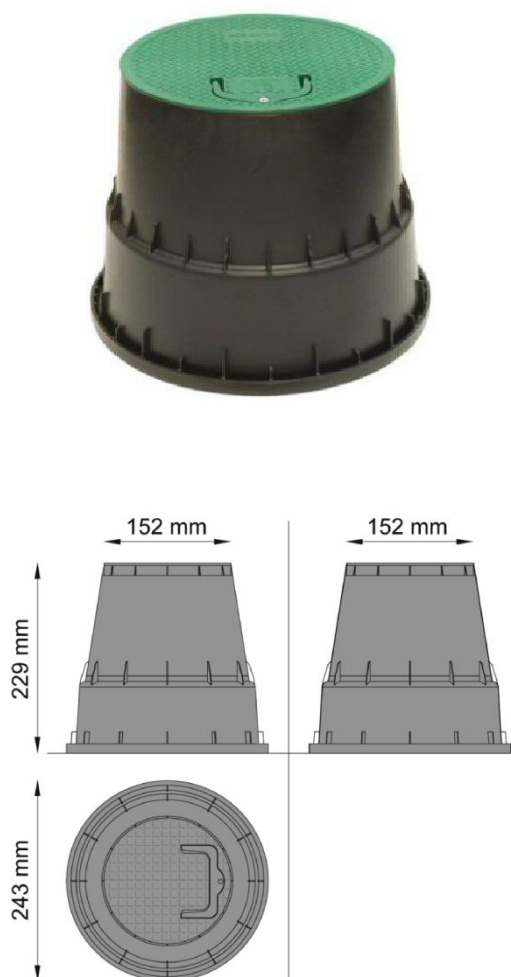
Production material:

- Green polyethylene lid (PEHD)
- Black polypropylene (PP) lower body

Height: 22.9 cm

Lid longer side: 15.2 cm

Lid shorter side: 15.2 cm



SIZE	CODE	PRICE
15cm	EZOVB015	£16.28

EZ OPEN VALVE BOXES

EZ OPEN ROUND VALVE BOX - 25cm

TECHNICAL FEATURES

Valve box type: Circular

Max number of 1" solenoid valves: 1

Opening handle

Connectors and Controller hook

Closing screw

Production material:

- Green polyethylene lid (PEHD)
- Black polypropylene (PP) lower body

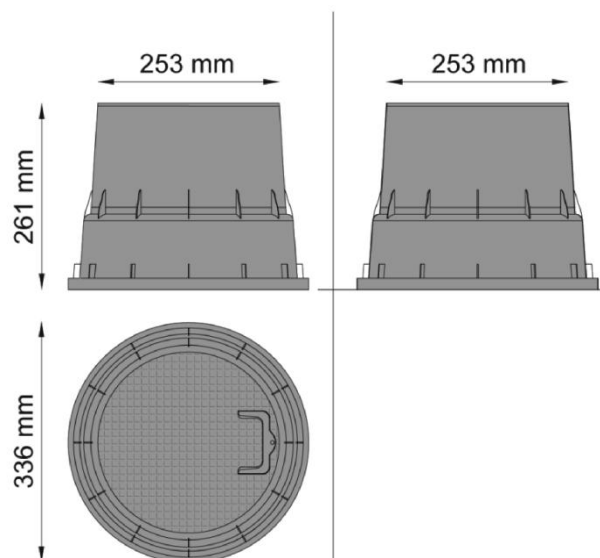
Height: 26.1 cm

Lid longer side: 25.3 cm

Lid shorter side: 25.3 cm

Longer side base: 33.6 cm

Shorter side base: 33.6 cm



SIZE	CODE	PRICE
25cm	EZOVB025	£24.77

EZ OPEN VALVE BOXES

EZ OPEN RECTANGULAR VALVE BOX 31cm x 23cm

TECHNICAL FEATURES

Valve box type: Rectangular

Max number of 1" solenoid valves: 3

Opening handle

Connectors and Controller hook

Closing screw

Production material:

- Green polyethylene lid (PEHD)
- Black polypropylene (PP) lower body

Height: 21.7 cm

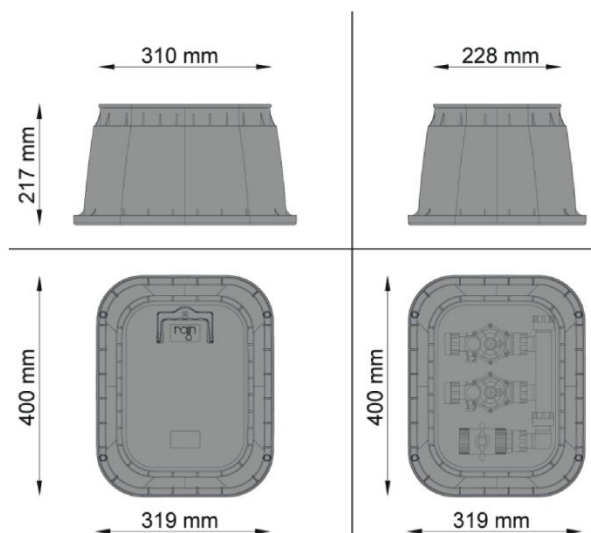
Lid longer side: 31 cm

Lid shorter side: 22.8 cm

Longer side base: 40 cm

Shorter side base: 31.9 cm

Total weight: 1.49 kg



SIZE	CODE	PRICE
31cm x 23cm	EZOVB031023	£46.36

EZ OPEN VALVE BOXES

EZ OPEN RECTANGULAR VALVE BOX 40cm x 27.5cm

TECHNICAL FEATURES

Valve box type: Rectangular

Max number of 1" solenoid valves: 4

Opening handle

Connectors and Controller hook

Closing screw

Production material:

- Green polyethylene lid (PEHD)
- Black polypropylene (PP) lower body

Height: 33 cm

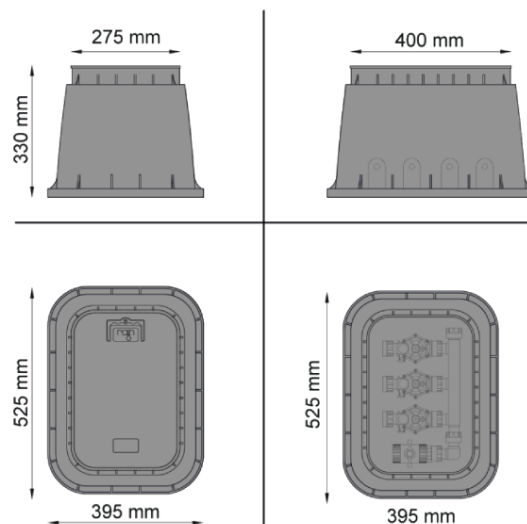
Lid longer side: 40 cm

Lid shorter side: 27.5 cm

Longer side base: 52.5 cm

Shorter side base: 39.5 cm

Total weight: 3.15 kg



SIZE	CODE	PRICE
40cm x 27.5cm	EZOVB040027	£74.30

EZ OPEN VALVE BOXES

EZ OPEN RECTANGULAR VALVE BOX 55.5cm x 38.5cm

TECHNICAL FEATURES

Valve box type: Rectangular

Max number of 1" solenoid valves: 6

Opening handle

Connectors and Controller hook

Closing screw

Production material:

- Green polyethylene lid (PEHD)
- Black polypropylene (PP) lower body

Height: 33 cm

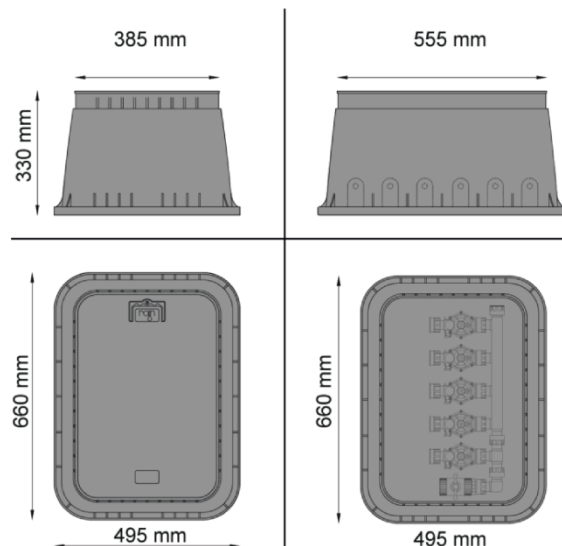
Lid longer side: 55.5 cm

Lid shorter side: 38.5 cm

Longer side base: 66 cm

Shorter side base: 49.5 cm

Total weight: 4.9 kg



SIZE	CODE	PRICE
55.5cm x 38.5cm	EZOVB055038	£113.38

EZ OPEN VALVE BOXES

EZ OPEN VALVE BOX NANO



SIZE	CODE	PRICE
40cm x 27.5cm x 17.6cm	EZOVBNO40027	£56.25
55.5cm x 38.5cm x 17.6cm	EZOVBNO55038	£103.95

EZ OPEN VALVE BOXES **CERTIFIED**

EZ OPEN CERTIFIED RECTANGULAR BOX 56.5cm x 40.5cm

TECHNICAL FEATURES

Valve box type: Rectangular

Type of opening: With patented handle

Locking type: With integrated nut and bolt
[UNI EN 124-6]

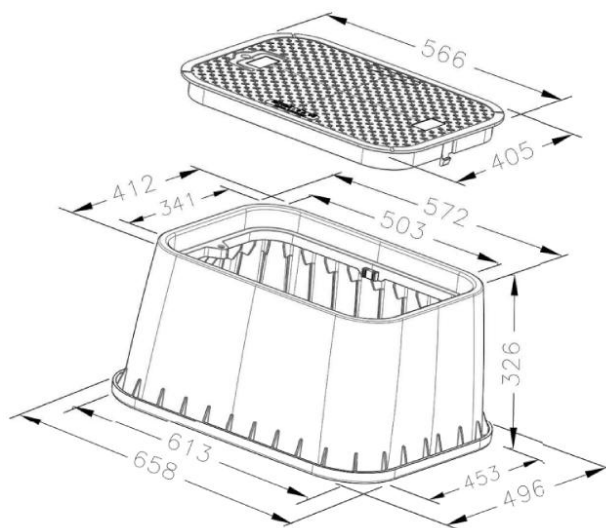
Production material: Glass fibre reinforced
polypropylene [UNI EN 124-6]

Certification: [UNI EN 124-6 A15]

Supported load: 15 kN [UNI EN 124-6]

Cable management holder

Rain controllers holder



Available to pre-order. Contact us on: 01782 894 912

SIZE	CODE	PRICE
42cm x 29cm	EZOVC042029	£152.98

EZ OPEN VALVE BOXES **CERTIFIED**

EZ OPEN CERTIFIED RECTANGULAR BOX 60.5cm x 40cm

TECHNICAL FEATURES

Valve box type: Rectangular

Type of opening: With patented handle

Locking type: With integrated nut and bolt
[UNI EN 124-6]

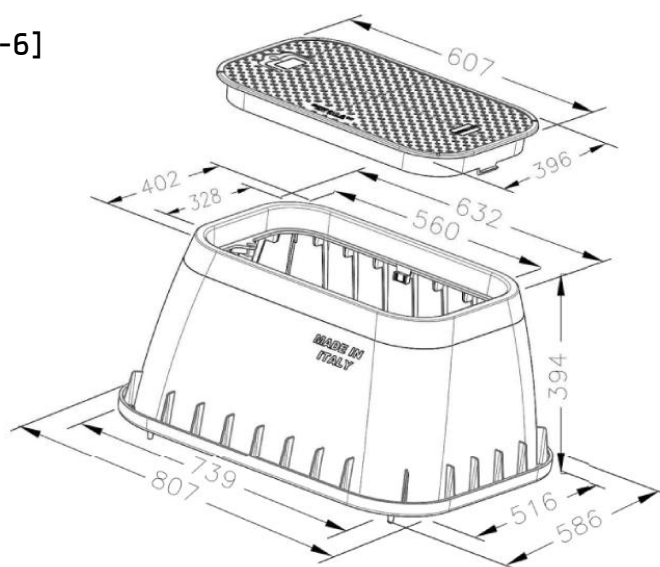
Production material: Glass fibre reinforced
polypropylene [UNI EN 124-6]

Certification: [UNI EN 124-6 A15]

Supported load: 15 kN [UNI EN 124-6]

Cable management holder

Rain controllers holder



Available to pre-order. Contact us on: 01782 894 912

SIZE	CODE	PRICE
60.5cm x 40cm	EZOVC060040	£528.00

TAPS, VALVES AND BALL VALVES

NYLON DOUBLE BIBCOCK STAINLESS STEEL HANDLE



SIZE	CODE	PRICE
1/2 INLET x 3/4 OUTLET x 3/4 VALVE	170-DTP0101-N	£42.59

NYLON DOUBLE BIBCOCK BRASS THREAD PLASTIC HANDLE



SIZE	CODE	PRICE
1/2 INLET x 3/4 OUTLET x 3/4 VALVE	170-DTP0101-B	£39.42

TAPS, VALVES AND BALL VALVES

NYLON BIBCOCK, BRASS THREAD STAINLESS STEEL HANDLE



SIZE	CODE	PRICE
1/2 THREAD	170-TPB0101-N	£25.54
3/4 THREAD	170-TPPB0202-N	£32.31

NYLON BIBCOCK BRASS THREAD PLASTIC HANDLE



SIZE	CODE	PRICE
1/2 THREAD	170-TPB0101-B	£15.85
3/4 THREAD	170-TPPB0202-B	£18.00

TAPS, VALVES AND BALL VALVES

NYLON BIBCOCK PLASTIC THREAD PLASTIC HANDLE



SIZE	CODE	PRICE
1/2" THREAD	170-TPP0101-B	£15.85
3/4" THREAD	170-TPP-0202-B	£18.00

NYLON BALL VALVE MALE TO FEMALE THREAD STAINLESS STEEL HANDLE



SIZE	CODE	PRICE
1/2" THREAD	170-VLFM0101-N	£19.03
3/4" THREAD	170-VLFM0202-N	£26.22
1" THREAD	170-VLFM0303-N	£37.71
2" THREAD	170-VLFM0606-N	£160.26

TAPS, VALVES AND BALL VALVES

NYLON BALL VALVE MALE TO FEMALE THREAD PLASTIC HANDLE



SIZE	CODE	PRICE
½ THREAD	170-VLFM0101-B	£15.68
¾ THREAD	170-VLFM0202-B	£22.20
1 THREAD	170-VLFM0303-B	£32.82

NYLON BALL VALVE FEMALE TO FEMALE THREAD STAINLESS STEEL HANDLE



SIZE	CODE	PRICE
½ THREAD	170-VLFF0101-N	£19.03
¾ THREAD	170-VLFF0202-N	£26.22
1" THREAD	170-VLFF0303-N	£37.71
1¼ THREAD	170-VLFF0404-N	£87.16
1½ THREAD	170-VLFF0505-N	£130.01
2" THREAD	170-VLFF0606-N	£160.26

TAPS, VALVES AND BALL VALVES

NYLON BALL VALVE FEMALE TO FEMALE THREAD PLASTIC HANDLE



SIZE	CODE	PRICE
½ THREAD	170-VLFF0101-B	£15.68
¾ THREAD	170-VLFF0202-B	£22.20
1" THREAD	170-VLFF0303-B	£32.82

COMPACT PVC VALVE MALE TO FEMALE THREAD



SIZE	CODE	PRICE
¾" THREAD	170-PV1FM0202	£7.28
1" THREAD	170-PV1FM0303	£11.48
1½ THREAD	170-PV1FM0505	£26.48
2" THREAD	170-PV1FM0606	£41.39

TAPS, VALVES AND BALL VALVES

COMPACT PVC VALVE FEMALE TO FEMALE THREAD



SIZE	CODE	PRICE
¾ THREAD	170-PV1FF0202	£7.28
1½ THREAD	170-PV1FF0505	£18.42
2 THREAD	170-PV1FF0606	£30.25

SINGLE UNION PVC VALVE MALE TO FEMALE THREAD



SIZE	CODE	PRICE
¾" THREAD	170-PV2FM0202	£9.94
1½" THREAD	170-PV2FM0505	£41.14
2" THREAD	170-PV2FM0606	£62.65

TAPS, VALVES AND BALL VALVES

SINGLE UNION PVC VALVE FEMALE TO FEMALE THREAD



SIZE	CODE	PRICE
¾" THREAD	170-PV2FF0202	£15.94
1" THREAD	170-PV1FF0505	£18.43
2" THREAD	170-PV2FF0606	£87.59

ANGLE SEAT VALVE MALE TO MALE



SIZE	CODE	PRICE
1"	170-DVMM0303	£60.85
1½"	170-DVMM0505	£93.41
2"	170-DVMM0606	£110.55

TOOLS AND SPARE PARTS

CHAMFERING TOOL



SIZE	CODE	PRICE
16 - 63mm	1506300000	£77.13

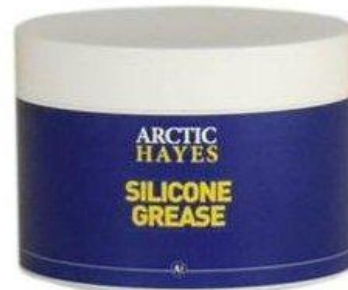
WRENCH



SIZE	CODE	PRICE
16 - 40mm	1502500006	£11.15
40 - 75mm	1504000005	£140.72
40 - 110mm	1506300005	£155.29

TOOLS AND SPARE PARTS

SILICONE GREASE



SIZE	CODE	PRICE
100g	AHSGWA100	£55.71
500g	AHSGWA500	£136.69

PTFE TAPE



SIZE	CODE	PRICE
12mm	52-12A0401	£0.86
19mm	52-19A0401	£5.91

TOOLS AND SPARE PARTS

250 SERIES NUT



SIZE	CODE	PRICE
16mm	25016H0510	£1.45
20mm	25020H0510	£1.45
25mm	25025H0510	£1.45
32mm	25032H0510	£1.45
40mm	25040H0510	£1.45
50mm	25050H0510	£1.45
63mm	25063H0510	£1.45
75mm	25075H0510	£1.45
90mm	25090H0510	£1.45
110mm	25110H0510	£1.45

TOOLS AND SPARE PARTS

250 SERIES GRIP RING



SIZE	CODE	PRICE
16mm	25016H0610	£1.65
20mm	25020H0610	£1.65
25mm	25025H0610	£1.65
32mm	25032H0610	£1.65
40mm	25040H0610	£1.65
50mm	25050H0610	£1.65
63mm	25063H0610	£1.65
75mm	25075H0610	£1.65
90mm	25090H0610	£1.65
110mm	25010H0610	£1.65

TOOLS AND SPARE PARTS

PIPE SHEARS



SIZE	CODE	PRICE
20 - 32mm	PS20-32000	£66.76
20 - 63mm	PS20-63000	£159.50

PIPE HAND SCRAPER



SIZE	CODE	PRICE
Hand scraper	EFHS03800	£47.50

TOOLS AND SPARE PARTS

250/350 SERIES SEALS



SIZE	CODE	PRICE
16mm	52016A2601	£1.25
20mm	52020A2601	£1.25
25mm	52025A2601	£1.25
32mm	52032A2601	£1.25
40mm	52040A2601	£1.25
50mm	52050A2601	£1.25
63mm	52063A2601	£1.25
75mm	52075A2601	£1.25
90mm	52090A2601	£1.25
110mm	52010A2601	£1.25



PLAS-FIT UK

Unit 2
Harvey Works
Lingard Street
Burslem
Stoke On Trent
ST6 1ED

01782 894912
office@plas-fit.co.uk

©Plas-Fit UK. All rights reserved. This catalogue, including all content, images, designs, and product descriptions, is the exclusive property of Plas-Fit UK and is protected under applicable copyright and intellectual property laws. No part of this catalogue may be copied, reproduced, distributed, or used in any form without prior written consent from Plas-Fit UK. Any unauthorised use or reproduction of any part of this catalogue may result in legal action. Product images used are for demonstration purposes only. Actual products may vary slightly in colour and shape. All errors and omissions accepted.

[\[Back to Contents\]](#)