



Product Catalogue







PLAS-FIT UK

Plas-Fit are one of the longest established and most respected manufacturers of Water fittings in the world. Tracing our ancestry back to the dawn of the modern pipe era in 1960.

With established operations in Germany and the Netherlands Plas-Fit have carefully planned our decision to serve the U.K. market.

From our base in the heart of this country in Stoke on Trent. You will find substantial stocks of all of our range of highest quality water fittings. We offer you a highly efficient delivery service and a wealth of experience from our staff, who already have a great reputation in the Water industry.




Our products carry British standards, WRAS approval and other International and European approvals giving you peace of mind when choosing Plas-Fit.

Our technical team are here to help and please contact our sales team for price information and learn about our latest offers and trade deals.

Choose Plas-Fit. The best of the best!

We are connected to your success!

Standard for water supply fittings Plas-Fit PN16 Series 250 / 350

	Pressure Rating (bar)	Diameter (mm)		
UK	16	20-110	Regulation 4 (2)	
GERMANY	16	20-110	GW 335-B3/ (P)	
THE CZECH REPUBLIC	16	40-110	ISO 17885	
ISRAEL	16	16-110	SII 17885	
SLOVAKIA	16	40-110	ISO 14236	

Our exclusive singular warranty

We use only the highest quality materials and manufacturing processes for our products, which meet the highest standards. Therefore, we warrant that our COMPRESSION FITTINGS AND ACCESSORIES FOR POLYETHYLENE PIPES, when used properly, are free from defect in material and/or workmanship. That we replace, at our discretion, any product, deemed by us to be defective in material and/or workmanship. We warrant our products for up to 10 years. After the warranty period, we continue to provide field repair, maintenance and consultation services. The full exclusive terms of our warranty are as detailed in our Basic Commercial Warranty and the applicable Commercial Warranty Supplement. We will not be liable for any commitments or agreements made by any of our agents, representatives and/or dealers, and/or any other commitments, other than the aforementioned Basic Commercial Warranty and the applicable Commercial Warranty Supplement.

CONTENTS / CONTACTS

Plas-Fit PN16 Series 250 / 350 5

Universal Fittings..... 12

Stop Cock 13

Pipe Liners 14

Spare Parts & Tools 15

Contacts

Ian Grant

Mobile: +44.7752.128038

Mail: ian.g@plas-fit.co.uk

Ziv Dotan

Mobile: +44.7905.655465

Mail: ziv.d@plas-fit.co.uk

Andrew Day

Mobile: +44.7368.202635

Office: +44.1782.894912

Mail: andrew.d@plas-fit.co.uk



Technical Support, Sales & Service
Local: 1782 894912 | National: 03301 180289
office@Plas-Fit.co.uk | www.Plas-Fit.co.uk

Terms and conditions of sale:
please refer to our website www.Plas-Fit.co.uk

Catalogue Version: PFLUK-CAT-ENG-09.23

PLAS-FIT PN16

Series 250 / 350

Plas-Fit Series 250 and Series 350 are designed to provide best performance with competitive pricing, providing easy installation together with high pressure rating of 16bar. Features reliable self-locking grip-ring technology, certified by WRAS (UK) and DVGW (Germany) for use of drinking water installations up to PN16.

Technical Specifications

- ✓ Allows easy installation without need to disassemble the fitting
- ✓ Robust, corrosion-resistant and resistant to most chemicals
- ✓ Stands up to tough working conditions, pipe bending and pull-out forces
- ✓ Complies with WRAS, the Israeli institute of standards and the German standard DVGW
- ✓ Working pressure sizes 63-110: PN16



Series 250 (Easy-Seal) Sizes: 40-63mm

Re- designed seals to reduce the required insertion force of the pipe into the fitting. The new seal provides easy assembly with maximum rated pressure of PN16.



Series 350 (Easy System) Sizes: 75-110mm

No force required for inserting the pipe to the fitting. The pipe is simply dropped into the fitting, and the sealing is done during the tightening of the nut. This provides optimal assembly with maximum rated pressure of PN16.

COUPLINGS

Size	Cat. Number	Quantity Per Box	
		A2	A3
16 x 16	250 16 M 00 16	100	
20 x 20	250 20 M 00 20	60	
25 x 25	250 25 M 00 25	45	
32 x 32	250 32 M 00 32		50
40 x 40	250 40 M 00 40		30
50 x 50	250 50 M 00 50		20
63 x 63	250 63 M 00 63		12
75 x 75	350 75 M 00 75		8
90 x 90	350 90 M 00 90		3
110 x 110	351 10 M 01 10		2



COUPLING



Size	Cat. Number	Quantity Per Box	
		A2	A3
16 x 1/2"	250 16 M 01 01	150	
16 x 3/4"	250 16 M 01 02	150	
20 x 1/2"	250 20 M 01 01	100	
20 x 3/4"	250 20 M 01 02	100	
20 x 1"	250 20 M 01 03	75	
25 x 1/2"	250 25 M 01 01	80	
25 x 3/4"	250 25 M 01 02	80	
25 x 1"	250 25 M 01 03	60	
32 x 3/4"	250 32 M 01 02		80
32 x 1"	250 32 M 01 03		80
32 x 1 1/2"	250 32 M 01 05		70
40 x 1"	250 40 M 01 03		50
40 x 1 1/2"	250 40 M 01 05		45
40 x 2"	250 40 M 01 06		45
50 x 1"	250 50 M 01 03		30
50 x 1 1/4"	250 50 M 01 04		30
50 x 1 1/2"	250 50 M 01 05		30
50 x 2"	250 50 M 01 06		30
63 x 1 1/2"	250 63 M 01 05		20
63 x 2"	250 63 M 01 06		18
63 x 2 1/2"	250 63 M 01 07		18
75 x 2"	350 75 M 01 06		16
75 x 2 1/2"	350 75 M 01 07		16
75 x 3"	350 75 M 01 08		13
90 x 2"	350 90 M 01 06		6
90 x 2 1/2"	350 90 M 01 07		6
90 x 3"	350 90 M 01 08		6
90 x 4"	350 90 M 01 14		6
110 x 2"	351 10 M 01 06		4
110 x 3"	351 10 M 01 08		4
110 x 4"	351 10 M 01 14		4



THREADED MALE COUPLING



COUPLINGS

Size	Cat. Number	Quantity Per Box	
		A2	A3
25	250 25 S 01 20	80	
32	250 32 S 01 20		80
40	250 40 S 01 20		50
50	250 50 S 01 20		35
63	250 63 S 01 20		20
75	350 75 S 01 20		14
90	350 90 S 01 20		6
110	351 10 S 01 20		4



LINE END



Size	Cat. Number	Quantity Per Box	
		A2	A3
16 x 1/2"	250 16 M 02 01	175	
16 x 3/4"	250 16 M 02 02	150	
20 x 1/2"	250 20 M 02 01	100	
20 x 3/4"	250 20 M 02 02	100	
25 x 1/2"	250 25 M 02 01	100	
25 x 3/4"	250 25 M 02 02	80	
25 x 1"	250 25 M 02 03	60	
32 x 3/4"	250 32 M 02 02		80
32 x 1"	250 32 M 02 03		80
40 x 1"	250 40 M 02 03		50
40 x 1 1/2"	250 40 M 02 05		50
50 x 1 1/4"	250 50 M 02 04		30
50 x 1 1/2"	250 50 M 02 05		35
50 x 2"	250 50 M 02 06		30
63 x 1 1/2"	250 63 M 02 05		20
63 x 2"	250 63 M 02 06		20
63 x 2 1/2"	250 63 M 02 07		18
75 x 2"	350 75 M 02 06		13
75 x 2 1/2"	350 75 M 02 07		12
75 x 3"	350 75 M 02 08		6
90 x 2"	350 90 M 02 06		6
90 x 2 1/2"	350 90 M 02 07		6
90 x 3"	350 90 M 02 08		6
90 x 4"	350 90 M 02 14		6
110 x 3"	351 10 M 02 08		4
110 x 4"	351 10 M 02 14		4



THREADED FEMALE COUPLING



Products above 1 1/4" outlet will be supplied with reinforced metal ring

COUPLINGS

Size	Cat. Number	Quantity Per Box	
		A2	A3
20 x 16	250 20 D 00 16	60	
25 x 16	250 25 D 00 16	60	
25 x 20	250 25 D 00 20	60	
32 x 20	250 32 D 00 20		60
32 x 25	250 32 D 00 25		60
40 x 25	250 40 D 00 25		40
40 x 32	250 40 D 00 32		40
50 x 32	250 50 D 00 32		30
50 x 40	250 50 D 00 40		25
63 x 32	250 63 D 00 32		14
63 x 50	250 63 D 00 50		14
75 x 63	350 75 D 00 63		8
90 x 63	350 90 D 00 63		6
90 x 75	350 90 D 00 75		6
110 x 75	351 10 D 00 75		4
110 x 90	351 10 D 00 90		4



REDUCING COUPLING



Size	Cat. Number	Quantity Per Box	
		A2	A3
25 x 25	250 25 K 00 25	40	
32 x 32	250 32 K 00 32		40
40 x 40	250 40 K 00 40		25
50 x 50	250 50 K 00 50		18
63 x 63	250 63 K 00 63		9
75 x 75	350 75 K 00 75		5
90 x 90	350 90 K 00 90		2
110 x 110	351 10 K 01 10		1



REPAIR COUPLING



ELBOWS

Size	Cat. Number	Quantity Per Box	
		A2	A3
16 x 16	250 16 Z 00 16	100	
20 x 20	250 20 Z 00 20	60	
25 x 25	250 25 Z 00 25	30	
32 x 32	250 32 Z 00 32		45
40 x 40	250 40 Z 00 40		25
50 x 50	250 50 Z 00 50		16
63 x 63	250 63 Z 00 63		9
75 x 75	350 75 Z 00 75		6
90 x 90	350 90 Z 00 90		4
110 x 110	351 10 Z 01 10		2



ELBOW



Size	Cat. Number	Quantity Per Box	
		A2	A3
20 x 1/2"	250 20 Z 01 01	75	
20 x 3/4"	250 20 Z 01 02	75	
25 x 1/2"	250 25 Z 01 01	60	
25 x 3/4"	250 25 Z 01 02	60	
25 x 1"	250 25 Z 01 03	60	
32 x 1"	250 32 Z 01 03		70
40 x 1 1/2"	250 40 Z 01 05		30
50 x 1 1/2"	250 50 Z 01 05		25
50 x 2"	250 50 Z 01 06		20
63 x 2"	250 63 Z 01 06		15
63 x 2 1/2"	250 63 Z 01 07		14
75 x 2 1/2"	350 75 Z 01 07		9
75 x 3"	350 75 Z 01 08		8
90 x 3"	350 90 Z 01 08		4
110 x 4"	351 10 Z 01 14		2



THREADED MALE ELBOW



Size	Cat. Number	Quantity Per Box	
		A2	A3
20 x 1/2"	250 20 Z 02 01	75	
20 x 3/4"	250 20 Z 02 02	75	
25 x 1/2"	250 25 Z 02 01	65	
25 x 3/4"	250 25 Z 02 02	60	
25 x 1"	250 25 Z 02 03	40	
32 x 3/4"	250 32 Z 02 02		70
32 x 1"	250 32 Z 02 03		70
40 x 1 1/2"	250 40 Z 02 05		30
50 x 1 1/2"	250 50 Z 02 05		25
50 x 2"	250 50 Z 02 06		20
63 x 2"	250 63 Z 02 06		13
63 x 2 1/2"	250 63 Z 02 07		12
75 x 2 1/2"	350 75 Z 02 07		8
75 x 3"	350 75 Z 02 08		8
90 x 3"	350 90 Z 02 08		4
110 x 4"	351 10 Z 02 14		2



THREADED FEMALE ELBOW



Products above 1 1/4" outlet will be supplied with reinforced metal ring

Size	Cat. Number	Quantity Per A2 Box
20 x 1/2"	250 20 W 02 01	55
25 x 3/4"	250 25 W 02 02	40

WALL-ELBOW



TEES

Size	Cat. Number	Quantity Per Box	
		A2	A3
16 x 16 x 16	250 16 T 00 16	60	
20 x 20 x 20	250 20 T 00 20	30	
25 x 25 x 25	250 25 T 00 25	20	
32 x 32 x 32	250 32 T 00 32		30
40 x 40 x 40	250 40 T 00 40		15
50 x 50 x 50	250 50 T 00 50		10
63 x 63 x 63	250 63 T 00 63		6
75 x 75 x 75	350 75 T 00 75		3
90 x 90 x 90	350 90 T 00 90		2
110 x 110 x 110	351 10 T 01 10		1



TEE



Size	Cat. Number	Quantity Per Box	
		A2	A3
20 x 16 x 20	250 20 T 00 16	40	
25 x 20 x 25	250 25 T 00 20	20	
32 x 25 x 32	250 32 T 00 25		30
40 x 32 x 40	250 40 T 00 32		40
50 x 40 x 50	250 50 T 00 40		12
63 x 25 x 63	250 63 T 00 25		7
63 x 32 x 63	250 63 T 00 32		7
63 x 50 x 63	250 63 T 00 50		7
75 x 63 x 75	350 75 T 00 63		4
90 x 75 x 90	350 90 T 00 75		2
110 x 90 x 110	351 10 T 00 90		1



REDUCING TEE



Size	Cat. Number	Quantity Per Box	
		A2	A3
20 x 1/2" x 20	250 20 T 01 01	45	
20 x 3/4" x 20	250 20 T 01 02	45	
25 x 1/2" x 25	250 25 T 01 01	30	
25 x 3/4" x 25	250 25 T 01 02	30	
32 x 1" x 32	250 32 T 01 03		40
40 x 1" x 40	250 40 T 01 03		20
40 x 1 1/2" x 40	250 40 T 01 05		20
50 x 1 1/2" x 50	250 50 T 01 05		15
63 x 2" x 63	250 63 T 01 06		8
75 x 2" x 75	350 75 T 01 06		5
75 x 2 1/2" x 75	350 75 T 01 07		4
75 x 3" x 75	350 75 T 01 08		4
90 x 3" x 90	350 90 T 01 08		2
110 x 4" x 110	351 10 T 01 14		1



THREADED MALE TEE



TEES

Size	Cat. Number	Quantity Per Box	
		A2	A3
16 x 1/2" x 16	250 16 T 02 01	80	
16 x 3/4" x 16	250 16 T 02 02	80	
20 x 1/2" x 20	250 20 T 02 01	45	
20 x 3/4" x 20	250 20 T 02 02	45	
25 x 1/2" x 25	250 25 T 02 01	30	
25 x 3/4" x 25	250 25 T 02 02	30	
25 x 1" x 25	250 25 T 02 03	40	
32 x 3/4" x 32	250 32 T 02 02		40
32 x 1" x 32	250 32 T 02 03		40
40 x 1 1/2" x 40	250 40 T 02 05		20
50 x 1 1/2" x 50	250 50 T 02 05		15
50 x 2" x 50	250 50 T 02 06		14
63 x 2" x 63	250 63 T 02 06		8
63 x 2 1/2" x 63	250 63 T 02 07		8
75 x 2" x 75	350 75 T 02 06		4
75 x 2 1/2" x 75	350 75 T 02 07		4
75 x 3" x 75	350 75 T 02 08		4
90 x 3" x 90	350 90 T 02 08		2
110 x 4" x 110	351 10 T 02 14		1

Products above 1 1/4" outlet will be supplied with reinforced metal ring

THREADED FEMALE TEE



FLANGED ADAPTOR

Size Ø=D"	Cat. Number	Quantity Per A3 Box	No. of Holes	Distance between hole centers (mm)
50 x 1 1/2" (DN40)	250 50 F 00 05	22	4	110
50 x 2" (DN50)	250 50 F 00 06	20	4	125
63 x 2" (DN50)	250 63 F 00 06	20	4	125
63 x 2 1/2" (DN50)	250 63 F 00 07	15	4	145
75 x 2 1/2" (DN65)	350 75 F 00 07	15	4	145
75 x 3" (DN80)	350 75 F 00 08	10	8	160
90 x 3" (DN80)	350 90 F 00 08	10	8	160
90 x 4" (DN100)	350 90 F 00 14	6	8	180
110 x 4" (DN100)	351 10 F 00 14	6	8	180

Note: Set the perfect anchor including nut and bolt seal

* The complete flanged adaptor is supplied with a kit of bolts, nuts, and seals.

FLANGED ADAPTOR COMPLETE*



UNIVERSAL FITTINGS

The Unifit product components are designed to seal the various diameters of material pipes and is especially designed for the water transportation industry.

The fitting are suitable for different pipe diameters and for tubes of different kind of materials (metal and plastics) the Unifit provides means of connecting Polyethylene pipes to a variety of plumbing pipe materials, using push-fit technology for fast connection.

Pipes made of materials such as Copper, Polybutylene & PEX can be inserted through the push-fit side of the fitting, ensuring optimum sealing and gripping of the system. Polyethylene pipes are inserted from the other side of the fitting which is operated with our 250 series mechanical fastening mechanism.

Features

- ✓ The connector has a particularly flexible mechanism allowing connections to diameters in the 15-34mm range
- ✓ Double sealing - hydraulic and mechanical
- ✓ Working pressure: PN16

Description	Cat. Number	Qty. per A4 box
Unifit coupling PE 20mm to Universal 15-22mm	250 15 M 50 20	80
Unifit coupling PE 25mm to Universal 15-22mm	250 15 M 50 25	80
Unifit coupling PE 25mm to Universal 20-27mm	250 21 M 50 25	70
Unifit coupling PE 32mm to Universal 20-27mm	250 21 M 50 32	55
Unifit coupling PE 25mm to Universal 27-34mm	250 27 M 50 25	60
Unifit coupling PE 32mm to Universal 27-34mm	250 27 M 50 32	55





STOP COCK

Plas-Fit UK offers a complete range of Stop-Cock valves sizes 20,25 &32mm designed for conveyance of fluids and developed for water utilities, plumbing, agriculture and irrigation applications.

The valves comply with the relevant international standards in terms of dimensions and mechanical properties. The valves are ideal for the conveyance of potable water and fluids for human consumption, as they are produced in accordance with international standards and regulations for health and safety.

To ensure that all requirements of standards and regulations are fulfilled, the valves are tested regularly and approved worldwide by the main testing institutes and certification bodies. The valves are characterized by a modern ergonomic design, they are designed to be user friendly for professionals and individuals.

Features

- ✓ Mechanism cannot be dismantled during operation
- ✓ Excellent flow characteristics
- ✓ Sensible pressure drop to the minimum
- ✓ Provides excellent flow control due to fine-tuning cartridge
- ✓ Confirm to sanitary and hygiene requirements
- ✓ Designed to withstand severe outdoor conditions with extensive lifespan
- ✓ Use of top class raw materials for better pressure resistance
- ✓ Proven leak-free secured system

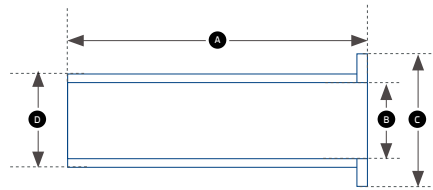
Description	Cat. Number	Qty. per A4 box
stop tap 20 x 20, Line 250 PN16	170 20 VST 00 20	150
stop tap 25 x 25, Line 250 PN16	170 25 VST 00 25	120
stop tap 32 x 32, Line 250 PN16	170 32 VST 00 32	100



*With flow direction arrow

PIPE LINERS

Description	Cat. Number
Liner for PE pipe (SDR9) 20mm	250 20 LN 00 20
Liner for PE pipe (SDR11) 25mm	250 25 LN 00 25
Liner for PE pipe (SDR11) 32mm	250 32 LN 00 32



Measurements

Dimensions	A	B	C	D
20mm	67.5	13.85	18.9	10.9
25mm	70.5	19.2	23.9	16.2
32mm	82.7	25.8	32.1	22.75

SPARE PARTS & TOOLS

Size	Cat. Number	Quantity per A3 box
16-63	150 63 0 00 00	60

CHAMFERING TOOL



Size	Cat. Number	Quantity Per Box		
		A1	A2	A3
16-40	150 25 0 00 06	30		
40-75	150 40 0 00 06		20	
63-110	150 63 0 00 05			10

WRENCH



Diameter	Cat. Number
16	250 16 H 05 10
20	250 20 H 05 10
25	250 25 H 05 10
32	250 32 H 05 10
40	250 40 H 05 10
50	250 50 H 05 10
63	250 63 H 05 10
75	250 75 H 05 10
90	250 90 H 05 10
110	251 10 H 05 10

SERIES 250 NUT



Diameter	Cat. Number
16	250 16 H 06 10
20	250 20 H 06 10
25	250 25 H 06 10
32	250 32 H 06 10
40	250 40 H 06 10
50	250 50 H 06 10
63	250 63 H 06 10
75	250 75 H 06 10
90	250 90 H 06 10
110	251 10 H 06 10

SERIES 250 GRIP RING

16-110 mm



Diameter	Cat. Number
16	520 16 A 26 01
20	520 20 A 26 01
25	520 25 A 26 01
32	520 32 A 26 01
40	520 40 A 26 01
50	520 50 A 26 01
63	520 63 A 26 01
75	520 75 A 36 31
90	520 90 A 36 31
110	521 10 A 36 31

SERIES 250/350 SEALS

O-RING 16-32 mm

EASY SEAL 40-63 mm

EASY SYSTEM 75-110 mm



PLAS-FIT UK

Connected to your success

Contact us
for price and delivery information



Plas-Fit UK LTD.

Unit 18 Whieldon Road Ind Est
Whieldon Road, Fenton
Stoke On Trent
ST4 4JP
United Kingdom

Tel (local): 01782 894912
Tel (national): 033011 80289
office@plas-fit.co.uk
www.plas-fit.co.uk